

CD63 Rabbit mAb

Catalog No: #48772



Package Size: #48772-1 50ul #48772-2 100ul

Orders: order@signalwayantibody.comSupport: tech@signalwayantibody.com

Description

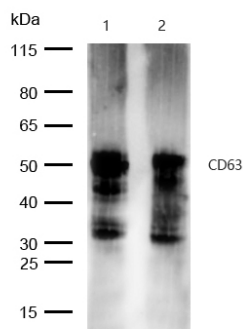
Product Name	CD63 Rabbit mAb
Host Species	Recombinant Rabbit
Clonality	Monoclonal
Clone No.	SY21-02
Purification	Affinity-chromatography
Applications	WB IHC ICC/IF
Species Reactivity	Human
Immunogen Description	A synthesized peptide derived from human CD63
Conjugates	Unconjugated
Other Names	Lysosomal associated membrane protein 3 antibody CD 63 antibody CD63 antibody CD63 antigen (melanoma 1 antigen) antibody CD63 antigen antibody CD63 antigen melanoma 1 antigen antibody CD63 molecule antibody CD63_HUMAN antibody gp55 antibody Granulophysin antibody LAMP 3 antibody LAMP-3 antibody LAMP3 antibody LIMP antibody Lysosomal-associated membrane protein 3 antibody Lysosome associated membrane glycoprotein 3 antibody Mast cell antigen AD1 antibody ME491 antibody Melanoma 1 antigen antibody Melanoma associated antigen ME491 antibody Melanoma associated antigen MLA1 antibody Melanoma-associated antigen ME491 antibody MGC72893 antibody MLA 1 antibody MLA1 antibody NGA antibody Ocular melanoma associated antigen antibody Ocular melanoma-associated antigen antibody OMA81H antibody PTLGP40 antibody Tetraspanin 30 antibody Tetraspanin-30 antibody Tspan 30 antibody Tspan-30 antibody TSPAN30 antibody
Accession No.	Swiss-Prot#:P08962
Calculated MW	26kDa
SDS-PAGE MW	30-60kDa
Formulation	Rabbit IgG in phosphate buffered saline , pH 7.4, 150mM NaCl, 0.02% sodium azide and 50% glycerol
Storage	Store at +4°C short term. Store at -20°C long term. Avoid freeze / thaw cycle.

Application Details

WB 1:1000~1:2000

IHC 1:500~1:1000

Images



All lanes: CD63 Rabbit mAb at 1/1k dilution

Lane 1 : A-375 whole cell lysates

Lane 2 : U-87 MG whole cell lysates

Lysates/proteins at 20 µg per lane.

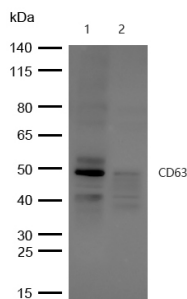
Secondary

All lanes : Goat Anti-Rabbit IgG H&L (HRP) at 1/20000 dilution

Predicted band size: 26 kDa

Observed band size: 30-60 kDa

Exposure time: 7 seconds

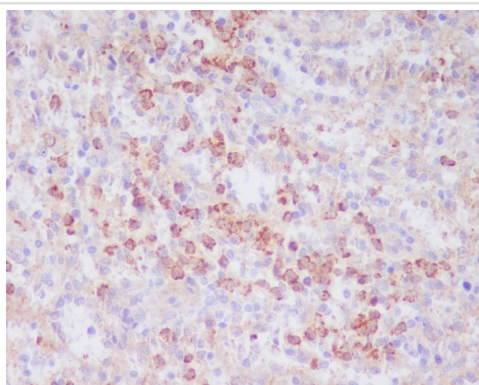


All lanes : CD63 Rabbit mAb at 1/1k dilution

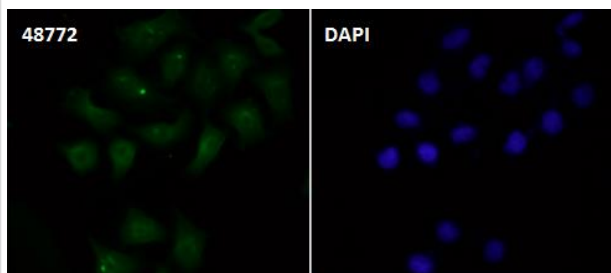
Lane 1 : Wild-type HAP1 cell lysate

Lane 2 : CD63 knockdown HAP1 cell lysate

Lysates/proteins at 20 µg per lane.



Formalin-fixed, paraffin-embedded human spleen tissue stained for CD63 using 48772 at 1/100 dilution in immunohistochemical analysis.



Immunocytochemistry/ Immunofluorescence CD63 antibody (48772) ICC/IF staining of CD63 in

Hela cells. Cells were fixed with 4% Paraformaldehyde permeabilized with 0.1% Triton X-100.

Samples were incubated with 48772 at a working dilution of 1/100. The secondary antibody was Alexa FluorB 488 goat anti rabbit, used at a dilution of 1/500.

Nuclei were counterstained with DAPI.

Background

Functions as cell surface receptor for TIMP1 and plays a role in the activation of cellular signaling cascades. Plays a role in the activation of ITGB1 and integrin signaling, leading to the activation of AKT, FAK/PTK2 and MAP kinases. Promotes cell survival, reorganization of the actin cytoskeleton, cell adhesion, spreading and migration, via its role in the activation of AKT and FAK/PTK2.

References

1. Ghossoub R et al. Syntenin-ALIX exosome biogenesis and budding into multivesicular bodies are controlled by ARF6 and PLD2. Nat Commun 5:3477 (2014).
2. Rodríguez M et al. Different exosome cargo from plasma/bronchoalveolar lavage in non-small-cell lung cancer. Genes Chromosomes Cancer 53:713-24 (2014).

Note: This product is for in vitro research use only and is not intended for use in humans or animals.