



beta &#8545 Tubulin Rabbit mAb

Catalog No: #48885

Package Size: #48885-1 50ul #48885-2 100ul

Orders: [order@signalwayantibody.com](mailto:order@signalwayantibody.com)  
Support: [tech@signalwayantibody.com](mailto:tech@signalwayantibody.com)

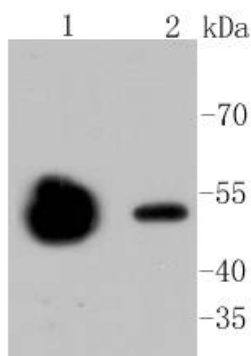
Description

Product Name	beta &#8545 Tubulin Rabbit mAb
Host Species	Recombinant Rabbit
Clonality	Monoclonal antibody
Clone No.	ST52-04
Purification	ProA affinity purified
Applications	WB; ICC/IF; IHC; IP
Species Reactivity	Human;Mouse;Rat
Immunogen Description	recombinant protein
Conjugates	Unconjugated
Other Names	bA506K6.1 antibody Beta2 antibody class II beta tubulin isotype antibody class IIa beta-tubulin antibody class IIb beta-tubulin antibody Class IVb beta tubulin antibody dJ40E16.7 antibody DKFZp566F223 antibody FLJ98847 antibody M(beta)2 antibody MGC8685 antibody OTTHUMP00000015956 antibody OTTHUMP00000015964 antibody TBB4B_HUMAN antibody TUBB 2 antibody TUBB 2A antibody TUBB 2C antibody TUBB antibody TUBB PARALOG antibody TUBB2 antibody TUBB2A antibody TUBB2B antibody TUBB2C antibody Tubb4b antibody Tubulin beta 2 antibody Tubulin beta 2 chain antibody Tubulin beta 2A antibody Tubulin beta 2A chain antibody Tubulin beta 2B antibody Tubulin beta 2B chain antibody Tubulin beta 2C antibody Tubulin beta polypeptide antibody Tubulin beta polypeptide 2 antibody Tubulin beta polypeptide paralog antibody Tubulin beta-2 chain antibody Tubulin beta-2C chain antibody Tubulin beta-4B chain antibody tubulin, beta 2A class IIa antibody tubulin, beta 2B class IIb antibody tubulin, beta 4B class IVb antibody Tubulin, beta, class IVB antibody Tubulin, beta-4B antibody
Accession No.	Swiss-Prot#:P68371
Calculated MW	50 kDa
Formulation	1*TBS (pH7.4), 1%BSA, 40%Glycerol. Preservative: 0.05% Sodium Azide.
Storage	Store at -20°C

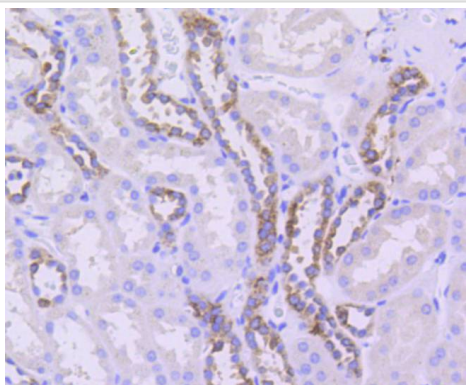
Application Details

WB: 1:1000-5000IHC: 1:50-1:200ICC/IF: 1:50-1:200IP: 1:25-1:100

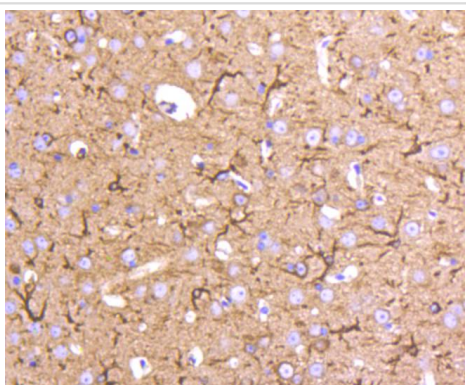
Images



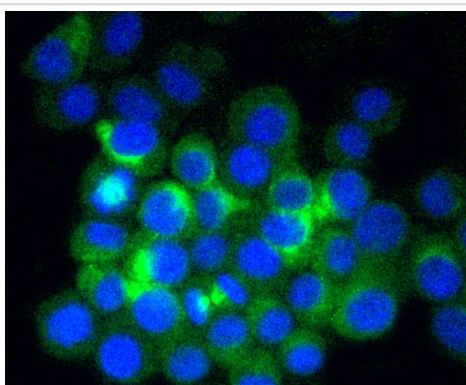
Western blot analysis of beta II Tubulin on different lysates using anti-beta II Tubulin antibody at 1/1,000 dilution. Positive control: Lane 1: Mouse brain Lane 2: Mouse kidney



Immunohistochemical analysis of paraffin-embedded human kidney tissue using anti-beta II Tubulin antibody. Counter stained with hematoxylin.



Immunohistochemical analysis of paraffin-embedded mouse brain tissue using anti-beta II Tubulin antibody. Counter stained with hematoxylin.



ICC staining beta II Tubulin in N2A cells (green). The nuclear counter stain is DAPI (blue). Cells were fixed in paraformaldehyde, permeabilised with 0.25% Triton X100/PBS.

## Background

Tubulin is a major cytoskeleton component that has five distinct forms, designated  $\alpha$ ,  $\beta$ ,  $\gamma$ ,  $\delta$  and  $\epsilon$  tubulin.  $\alpha$  and  $\beta$  tubulins form heterodimers which multimerize to form a microtubule filament. Multiple  $\beta$  Tubulin isoforms ( $\beta 1$ ,  $\beta 2$ ,  $\beta 3$ ,  $\beta 4$ ,  $\beta 5$ ,  $\beta 6$  and  $\beta 8$ ) have been characterized and are expressed in mammalian tissues.  $\beta 1$  and  $\beta 4$  are present throughout the cytosol,  $\beta 2$  is present in the nuclei and nucleoplasm, and  $\beta 3$  is a neuron-specific cytoskeletal protein.  $\gamma$  Tubulin forms the gammaosome, which is required for nucleating microtubule filaments at the centrosome. Both  $\delta$  Tubulin and  $\epsilon$  Tubulin are associated with the centrosome.  $\delta$  Tubulin is a homolog of the *Chlamydomonas*  $\delta$  Tubulin Uni3 and is found in association with the centrioles, whereas  $\epsilon$  Tubulin localizes to the pericentriolar material.  $\epsilon$  Tubulin exhibits a cell cycle-specific pattern of localization; first associating with only the older of the centrosomes in a newly duplicated pair, and later associating with both centrosomes.

## References

1. Gill, BC. et al. 2013. Neurotrophin therapy improves recovery of the neuromuscular continence mechanism following simulated birth injury in rats. *Neurourol. Urodyn.* 32: 82-87.
2. Lou, LX. et al. 2009. Endoplasmic reticulum stress involved in heart and liver injury in iron-loaded rats. *Clin. Exp. Pharmacol. Physiol.* 36: 612-618.

## Published Papers

el at., Potential role of the cAMP/PKA/CREB signalling pathway in hypoxic preconditioning and effect on propofol-induced neurotoxicity in the hippocampus of neonatal rats. *In Mol Med Rep* on 2019 Aug by Guan R, Lv J, et al.. PMID:31257533, , (2019)

[PMID:31257533](#)

el at., PD-L1 Expression Is Regulated By NF-κB During EMT Signalling In Gastric Carcinoma. *In Onco Targets Ther* on 2019 Nov 25 by Xu D, Li J, et al.. PMID:31819504, , (2019)

[PMID:31819504](#)

el at., Phenolic Glycosides from the Roots of *Ficus hirta* Vahl. and Their Antineuroinflammatory Activities. *In J Agric Food Chem* on 2020 Apr 8 by Xiansheng Ye, Wenjing Tian, et al.. PMID:32167773, , (2020)

[PMID:32167773](#)

el at., DPY30 Promotes Proliferation and Cell Cycle Progression of Colorectal Cancer Cells via Mediating H3K4 Trimethylation. *In Int J Med Sci* on 2023 May 11 by Wei-Chao Su, Xiao-Mei Mao et al.. PMID:37324189, , (2023)

[PMID:37324189](#)

Note: This product is for in vitro research use only and is not intended for use in humans or animals.