

Hes1 Rabbit mAb

Catalog No: #49016



Package Size: #49016-1 50ul #49016-2 100ul

Orders: order@signalwayantibody.com
Support: tech@signalwayantibody.com

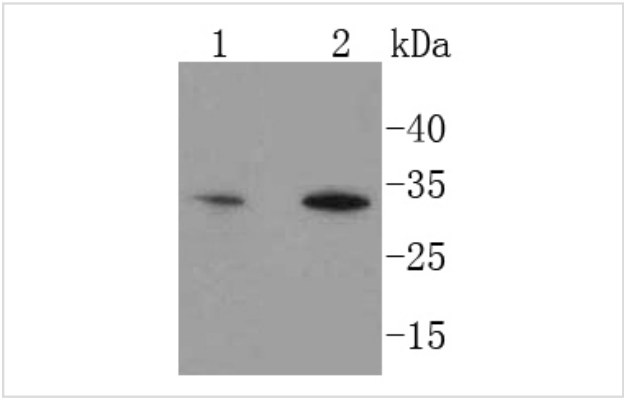
Description

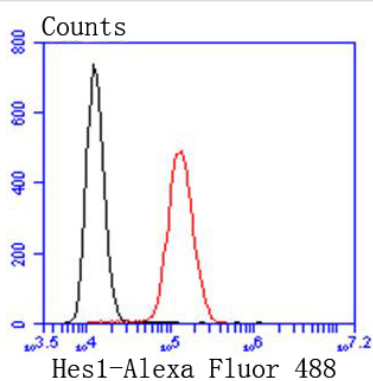
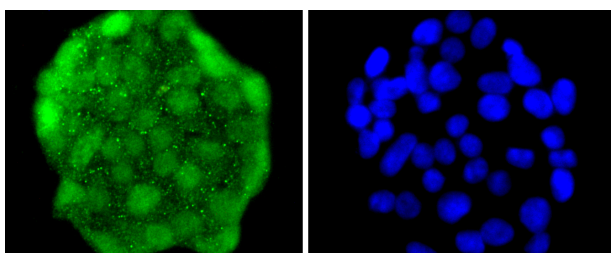
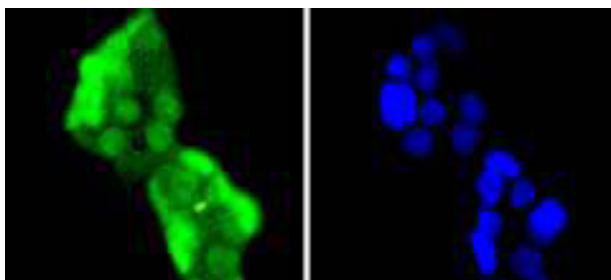
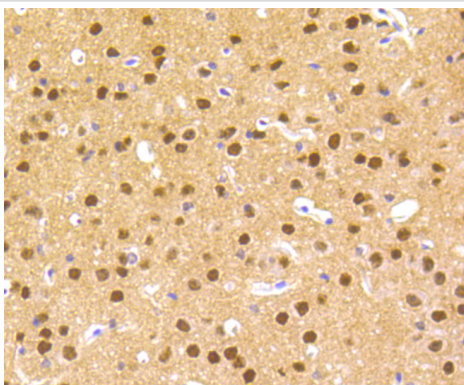
Product Name	Hes1 Rabbit mAb
Host Species	Recombinant Rabbit
Clonality	Monoclonal antibody
Clone No.	SC06-21
Purification	ProA affinity purified
Applications	WB, ICC/IF, IHC, FC
Species Reactivity	Human;Mouse;Rat
Immunogen Description	recombinant protein
Conjugates	Unconjugated
Other Names	bHLHb39 antibody C-HAIRY1 antibody c-hairy1A antibody Class B basic helix-loop-helix protein 39 antibody FLJ20408 antibody Hairy and enhancer of split 1 (Drosophila) antibody Hairy and enhancer of split 1 antibody Hairy homolog (Drosophila) antibody Hairy homolog antibody Hairy like antibody Hairy, Drosophila, homolog of antibody Hairy-like protein antibody Hairy/enhancer of split, Drosophila, homolog of, 1 antibody HAIRY1 antibody HES-1 antibody hes1 antibody Hes1 hairy and enhancer of split 1 (Drosophila) antibody HES1_HUMAN antibody HHL antibody HL antibody HRY antibody MGC129109 antibody OTTHUMP00000209031 antibody RHL antibody Transcription factor HES-1 antibody
Accession No.	Swiss-Prot#:Q14469
Calculated MW	30 kDa
Formulation	1*TBS (pH7.4), 1%BSA, 40%Glycerol. Preservative: 0.05% Sodium Azide.
Storage	Store at -20°C

Application Details

WB: 1:1,000IHC: 1:50-1:200 ICC: 1:100-1:500FC: 1:50-1:100

Images





Background

The *Drosophila* Hairy and enhancer of split genes encode basic helix-loop-helix (bHLH) transcriptional repressors that function in the Notch signaling pathway and control segmentation and neural development during embryogenesis. The mammalian homolog of *Drosophila* Hairy and enhancer of split are the HES gene family members HES1-6, which also encode bHLH transcriptional repressors that regulate myogenesis and neurogenesis. The HES family members form a complex with TLE, the mammalian homolog of groucho, and this interaction is mediated by the carboxy-terminal WRPW motif of the HES proteins. The HES/TLE complex functions by directly binding to DNA instead of interfering with activator proteins. Most HES family members, including HES1 and HES5, preferentially bind to the N box (CACNAG) as opposed to the E box (CANNTG). HES2 binds to both N and E box sites, while HES6 does not bind DNA. Rather, HES6 inhibits HES1 activity, thereby promoting transcription. HES1 and HES2 are expressed in a

variety of adult and embryonic tissues.

References

1. Liu W et al. MicroRNA-206 overexpression promotes apoptosis, induces cell cycle arrest and inhibits the migration of human hepatocellular carcinoma HepG2 cells. *Int J Mol Med* 34:420-8 (2014).
2. Tang Y et al. Rnd3 regulates lung cancer cell proliferation through notch signaling. *PLoS One* 9:e111897 (2014).

Note: This product is for in vitro research use only and is not intended for use in humans or animals.