

CD3D Rabbit mAb

Catalog No: #49268



Package Size: #49268-1 50ul #49268-2 100ul

Orders: order@signalwayantibody.comSupport: tech@signalwayantibody.com

Description

Product Name	CD3D Rabbit mAb
Host Species	Recombinant Rabbit
Clonality	Monoclonal
Clone No.	JJ08-97
Purification	Affinity-chromatography
Applications	WB;IHC;ICC/IF;IP;FC
Species Reactivity	Human
Immunogen Description	A synthesized peptide derived from human CD3 delta
Conjugates	Unconjugated
Other Names	CD3 antigen delta subunit antibody CD3 delta antibody CD3d antibody CD3d antigen delta polypeptide (TIT3 complex) antibody CD3d molecule delta (CD3-TCR complex) antibody CD3D_HUMAN antibody IMD19 antibody OKT3 delta chain antibody T cell receptor T3 delta chain antibody T-cell receptor T3 delta chain antibody T-cell surface glycoprotein CD3 delta chain antibody T3D antibody
Accession No.	Swiss-Prot#:P04234
Calculated MW	19 kDa
Formulation	Rabbit IgG in 10mM phosphate buffered saline , pH 7.4, 150mM sodium chloride, 0.05% BSA, 0.02% sodium azide and 50% glycerol.
Storage	Store at +4°C for short term. Store at -20°C for long term. Avoid freeze/thaw cycle.

Application Details

WB 1:1000-1:2000

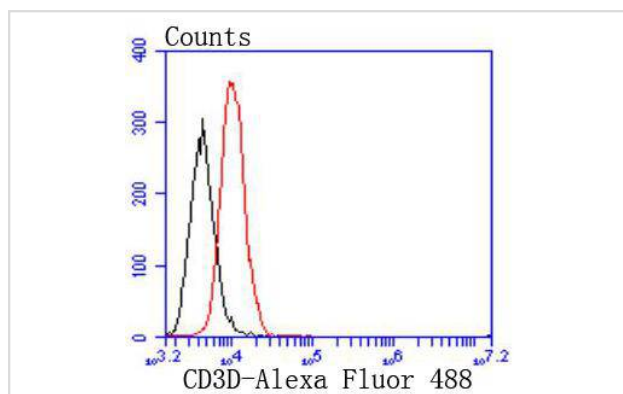
IHC 1:100-1:200

ICC/IF 1:50-1:200

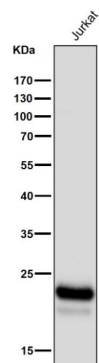
IP 1:20-1:50

FC 1:20-1:100

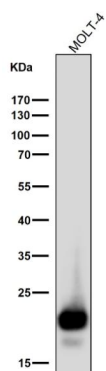
Images



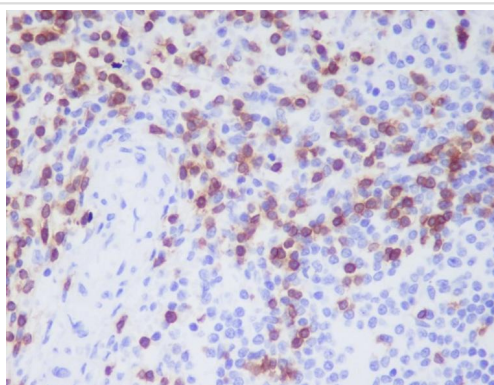
Flow cytometric analysis of Raji cells with CD3D antibody at 1/50 dilution (red) compared with an unlabelled control (cells without incubation with primary antibody; black). Alexa Fluor 488-conjugated goat anti rabbit IgG was used as the secondary antibody.



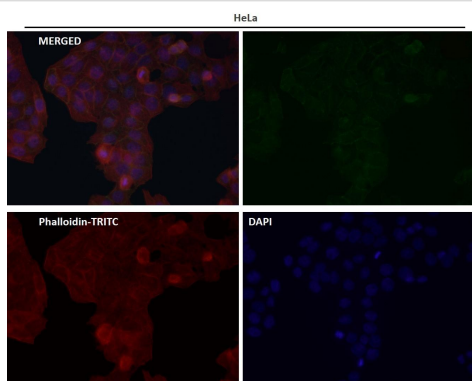
All lanes use the Antibody at 1:2K dilution for 1 hour at room temperature.



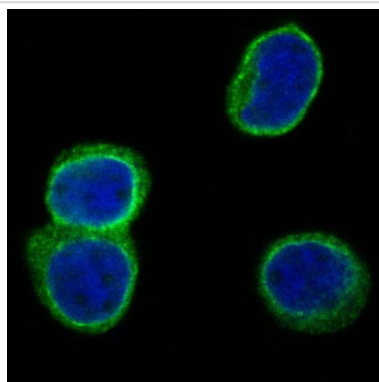
All lanes use the Antibody at 1:2K dilution for 1 hour at room temperature.



Immunohistochemical analysis of paraffin-embedded human spleen, using CD3D Antibody.



Immunofluorescent analysis using the Antibody at 1:50 dilution.



Immunofluorescent analysis of Jurkat cells, using CD3D Antibody.

Background

Part of the TCR-CD3 complex present on T-lymphocyte cell surface that plays an essential role in adaptive immune response.

References

1. Li X., et al. 2015. Identification of a FOXP3(+)CD3(+)CD56(+) population with immunosuppressive function in cancer tissues of human hepatocellular carcinoma. Sci Rep 5:14757-14757.
2. He Y., et al. 2015. Identification of the Docking Site for CD3 on the T Cell Receptor beta Chain by Solution NMR. J. Biol. Chem. 290:19796-19805.

Published Papers

el at., ScRNA-seq reveals novel immune-suppressive T cells and investigates CMV-TCR-T cells cytotoxicity against GBM. In J Immunother Cancer on 2024 Apr 30 by Xinmiao Long, Zuping Zhang, et al..PMID:38688579, , (2024)

[PMID:38688579](#)

Long Xinmiao;Zhang Zuping;Li Yuzhe;Deng Kun;Gao Wei;Huang Meng;Wang Xiangyu;Lin Xiang;She Xiaoling;Zhao Yiming;Zhang Minfu;Huang Cheng;Wang Shiyi;Du Yinfei;Du Peng;Chen Shuai;Liu Qing;Wu Minghua el at., ScRNA-seq reveals novel immunesuppressive T cells and investigates CMV-TCR-T cells cytotoxicity against GBM, , (2024)

[PMID:](#)

Note: This product is for in vitro research use only and is not intended for use in humans or animals.