

PDX1 Rabbit mAb

Catalog No: #49689



Package Size: #49689-1 50ul #49689-2 100ul

Orders: [order@signalwayantibody.com](mailto:order@signalwayantibody.com)  
Support: [tech@signalwayantibody.com](mailto:tech@signalwayantibody.com)

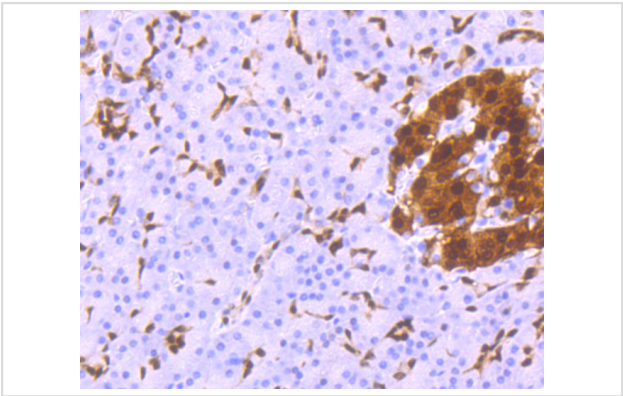
Description

Product Name	PDX1 Rabbit mAb
Host Species	Recombinant Rabbit
Clonality	Monoclonal antibody
Purification	ProA affinity purified
Applications	WB, IHC, ICC/IF
Species Reactivity	Hu
Immunogen Description	Recombinant protein
Other Names	Glucose sensitive factor antibody    Glucose-sensitive factor antibody    GSF antibody    IDX 1 antibody IDX-1 antibody    IDX1 antibody    Insulin promoter factor 1 antibody    Insulin promoter factor 1 homeodomain transcription factor antibody    Insulin upstream factor 1 antibody    IPF 1 antibody    IPF-1 antibody    IPF1 antibody    Islet/duodenum homeobox 1 antibody    Islet/duodenum homeobox-1 antibody IUF 1 antibody    IUF-1 antibody    IUF1 antibody    MODY4 antibody    Pancreas/duodenum homeobox 1 antibody    Pancreas/duodenum homeobox protein 1 antibody    pancreatic and duodenal homeobox P antibody    PDX 1 antibody    PDX-1 antibody    PDX1 antibody    PDX1_HUMAN antibody    Somatostatin transactivating factor 1 antibody    Somatostatin-transactivating factor 1 antibody    STF 1 antibody    STF-1 antibody    STF1 antibody
Accession No.	Swiss-Prot#:P52945
Formulation	1*TBS (pH7.4), 1%BSA, 40%Glycerol. Preservative: 0.05% Sodium Azide.
Storage	Store at -20°C

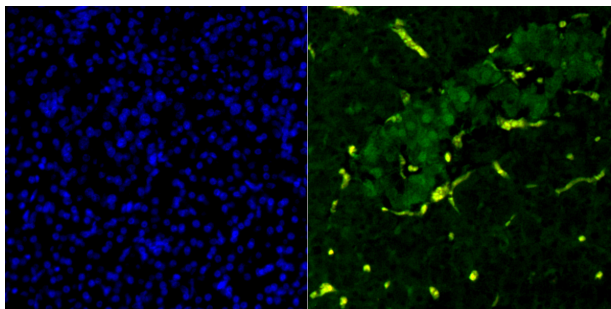
Application Details

IHC: 1:50-1:200    ICC/IF: 1:50-1:200

Images



Immunohistochemical analysis of paraffin-embedded human pancreas tissue using anti-PDX1 antibody. Counter stained with hematoxylin.



IF analysis of paraffin-embedded human pancreas tissue using anti-PDX1 antibody (green) and DAPI (blue). The nuclear counter stain is DAPI (blue).

## Background

Activates insulin, somatostatin, glucokinase, islet amyloid polypeptide and glucose transporter type 2 gene transcription. Particularly involved in glucose-dependent regulation of insulin gene transcription. Binds preferentially the DNA motif 5'-[CT]TAAT[ TG]-3'. During development, specifies the early pancreatic epithelium, permitting its proliferation, branching and subsequent differentiation. At adult stage, required for maintaining the hormone-producing phenotype of the beta-cell.

## References

1. Qiu G et al. Formononetin exhibits anti-hyperglycemic activity in alloxan-induced type 1 diabetic mice. *Exp Biol Med* (Maywood) 242:223-230 (2017).
2. Wang W et al. PDX1 and ISL1 differentially coordinate with epigenetic modifications to regulate insulin gene expression in varied glucose concentrations. *Mol Cell Endocrinol* 428:38-48 (2016).

**Note:** This product is for in vitro research use only and is not intended for use in humans or animals.