

# Secretory Phospholipase A2 Rabbit mAb

Catalog No: #52568



Package Size: #52568-1 50ul #52568-2 100ul

Orders: [order@signalwayantibody.com](mailto:order@signalwayantibody.com)  
Support: [tech@signalwayantibody.com](mailto:tech@signalwayantibody.com)

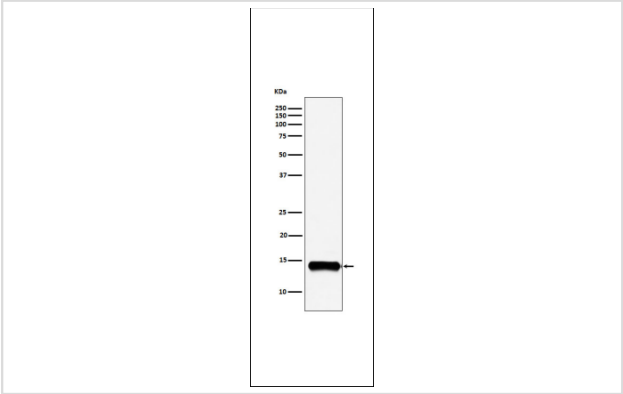
## Description

Product Name	Secretory Phospholipase A2 Rabbit mAb
Host Species	Recombinant Rabbit
Clonality	Monoclonal
Clone No.	S09-4F9
Isotype	Rabbit IgG
Purification	Affinity-chromatography
Applications	WB
Species Reactivity	Human;Mouse;Rat
Immunogen Description	A synthesized peptide derived from human PLA2G2A
Conjugates	Unconjugated
Modification	Unmodification
Other Names	MOM1; PLA2; PLA2B; PLA2L; PLA2S; PLAS1; sPLA2
Accession No.	Swiss-Prot:P14555GenelD:5320
Calculated MW	14kDa
Concentration	0.8 mg/ml
Formulation	Rabbit IgG in 10mM phosphate buffered saline , pH 7.4, 150mM sodium chloride, 0.05% BSA, 0.02% sodium azide and 50% glycerol.
Storage	Store at 4°C short term. Aliquot and store at -20°C long term. Avoid freeze/thaw cycles.

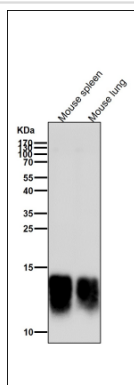
## Application Details

WB 1:1000-1:2000

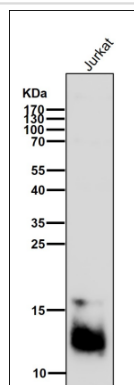
## Images



Western blot analysis of PLA2G2A expression in A549 cell lysate.



All lanes use the Antibody at 1:5K dilution for 1 hour at room temperature.



All lanes use the Antibody at 1:5K dilution for 1 hour at room temperature.

## Background

Thought to participate in the regulation of the phospholipid metabolism in biomembranes including eicosanoid biosynthesis. Catalyzes the calcium-dependent hydrolysis of the 2-acyl groups in 3-sn-phosphoglycerides.

Note: This product is for in vitro research use only and is not intended for use in humans or animals.