

LCN2 Rabbit Polyclonal Antibody

Catalog No: #53213

Package Size: #53213-1 50ul #53213-2 100ul

Orders: order@signalwayantibody.comSupport: tech@signalwayantibody.com

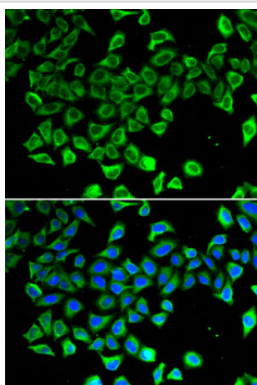
Description

Product Name	LCN2 Rabbit Polyclonal Antibody
Host Species	Rabbit
Clonality	Polyclonal
Isotype	IgG
Purification	Affinity purification
Applications	WB,IF
Species Reactivity	Human;Mouse;Rat
Immunogen Description	Recombinant protein of human LCN2
Conjugates	Unconjugated
Other Names	LCN2;24p3;MSFI;NGAL;p25
Accession No.	Swiss Prot:P80188GenelD:3934
Calculated MW	22kDa
SDS-PAGE MW	23kDa
Formulation	Buffer: PBS with 0.02% sodium azide,50% glycerol,pH7.3.
Storage	Store at -20°C. Avoid freeze / thaw cycles.

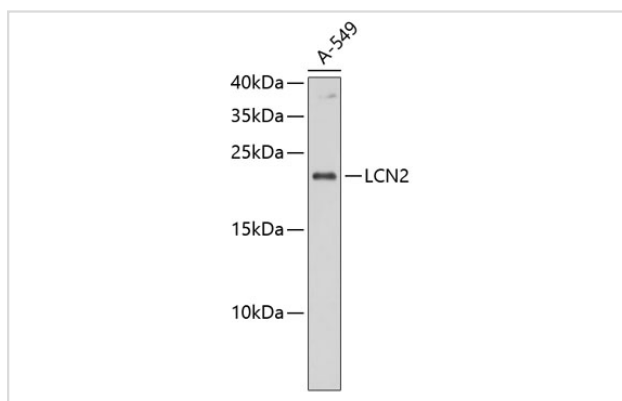
Application Details

WB□1:500 - 1:2000IF□1:10 - 1:100

Images



Immunofluorescence analysis of A-549 cells using LCN2 .
Blue: DAPI for nuclear staining.



Western blot analysis of extracts of A-549 cells, using LCN2 at 1:1000 dilution.

Background

This gene encodes a protein that belongs to the lipocalin family. Members of this family transport small hydrophobic molecules such as lipids, steroid hormones and retinoids. The protein encoded by this gene is a neutrophil gelatinase-associated lipocalin and plays a role in innate immunity by limiting bacterial growth as a result of sequestering iron-containing siderophores. The presence of this protein in blood and urine is an early biomarker of acute kidney injury. This protein is thought to be involved in multiple cellular processes, including maintenance of skin homeostasis, and suppression of invasiveness and metastasis. Mice lacking this gene are more susceptible to bacterial infection than wild type mice.

Note: This product is for in vitro research use only and is not intended for use in humans or animals.