

E-Cadherin Rabbit Polyclonal Antibody

Catalog No: #53252



Package Size: #53252-1 50ul #53252-2 100ul

Orders: order@signalwayantibody.com
Support: tech@signalwayantibody.com

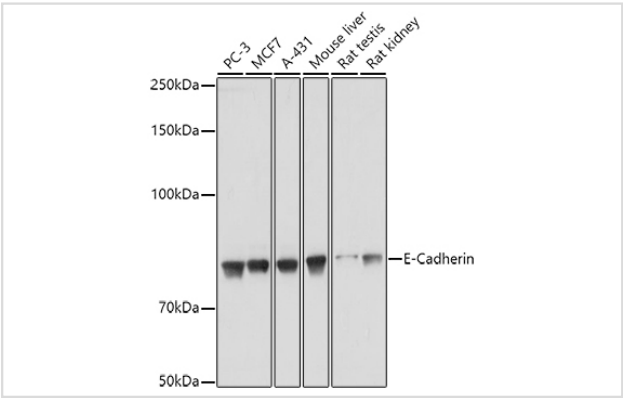
Description

Product Name	E-Cadherin Rabbit Polyclonal Antibody
Host Species	Rabbit
Clonality	Polyclonal
Isotype	IgG
Purification	Affinity purification
Applications	WB,IHC,IF
Species Reactivity	Human;Mouse;Rat
Immunogen Description	A synthetic peptide of human E-Cadherin (NP_004351.1).
Conjugates	Unconjugated
Other Names	Arc-1;CD324;CDHE;ECAD;LCAM;UVO;CDH1;E-Cadherin
Accession No.	Uniprot:P12830GenelD:999
Calculated MW	90kDa/97kDa
SDS-PAGE MW	80KDa
Formulation	PBS with 0.02% sodium azide,50% glycerol,pH7.3.
Storage	Store at -20°C. Avoid freeze / thaw cycles.

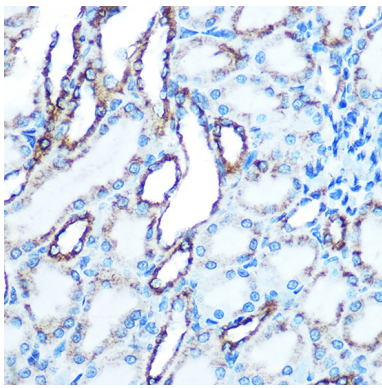
Application Details

WB 1:500 - 1:1000IHC 1:50 - 1:200IF 1:50 - 1:200

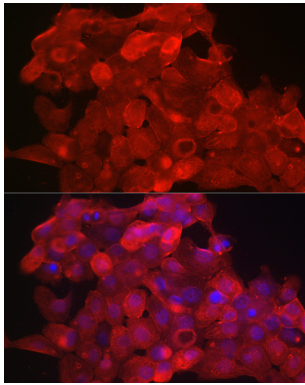
Images



Western blot analysis of extracts of various cell lines, using E-Cadherin antibody.



Immunohistochemistry of paraffin-embedded Rat kidney using E-Cadherin antibody.



Immunofluorescence analysis of A431 cells using E-Cadherin Rabbit pAb.

Background

This gene encodes a classical cadherin of the cadherin superfamily. Alternative splicing results in multiple transcript variants, at least one of which encodes a preproprotein that is proteolytically processed to generate the mature glycoprotein. This calcium-dependent cell-cell adhesion protein is comprised of five extracellular cadherin repeats, a transmembrane region and a highly conserved cytoplasmic tail. Mutations in this gene are correlated with gastric, breast, colorectal, thyroid and ovarian cancer. Loss of function of this gene is thought to contribute to cancer progression by increasing proliferation, invasion, and/or metastasis. The ectodomain of this protein mediates bacterial adhesion to mammalian cells and the cytoplasmic domain is required for internalization. This gene is present in a gene cluster with other members of the cadherin family on chromosome 16.

Published Papers

el at., Overexpression of Epithelial Splicing Regulatory Protein 1 in Metastatic Lesions of Serous Ovarian Carcinoma Correlates with Poor Patient Prognosis. In Cancer Biother Radiopharm on 2021 Sep 8 by Xinxin Lu, Runzhou Li, et al..PMID:34495766, , (2021)

[PMID:34495766](#)

el at., Everolimus Alleviates Renal Allograft Interstitial Fibrosis by Inhibiting Epithelial-to-Mesenchymal Transition Not Only via Inducing Autophagy but Also via Stabilizing IκB-α. In Front Immunol. 2022 Jan 24 by Zeping Gui , Chuanjian Suo,et al..PMID: 35140705, , (2022)

[PMID:35140705](#)

el at., Overexpression of Epithelial Splicing Regulatory Protein 1 in Metastatic Lesions of Serous Ovarian Carcinoma Correlates with Poor Patient Prognosis. In Cancer Biother Radiopharm on 2022 Nov by Xinxin Lu, Runzhou Li, et al..PMID:34495766, , (2022)

[PMID:34495766](#)

el at., Stevioside inhibits lipopolysaccharide-induced epithelial-to-mesenchymal transition of NRK-52E cells by PPARγ activation. In Immunopharmacol Immunotoxicol on 2022 Apr by Wei Shen, Hui HuangoO et al..PMID:35139741, , (2022)

[PMID:35139741](#)

Note: This product is for in vitro research use only and is not intended for use in humans or animals.