

WIF1 Rabbit Polyclonal Antibody

Catalog No: #53483

Package Size: #53483-1 50ul #53483-2 100ul

Orders: order@signalwayantibody.comSupport: tech@signalwayantibody.com

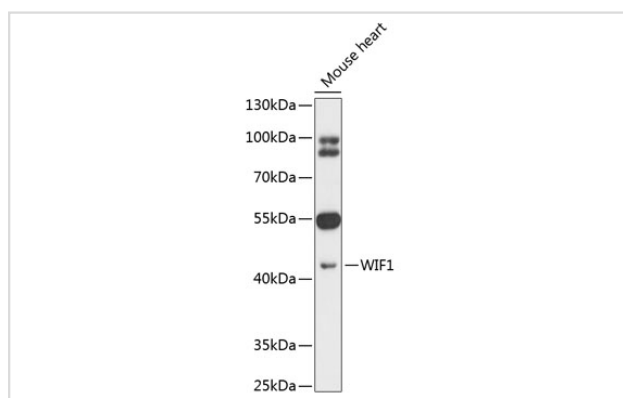
Description

Product Name	WIF1 Rabbit Polyclonal Antibody
Host Species	Rabbit
Clonality	Polyclonal
Isotype	IgG
Purification	Affinity purification
Applications	WB,IHC
Species Reactivity	Human;Mouse;Rat
Immunogen Description	Recombinant fusion protein of human WIF1 (NP_009122.2).
Conjugates	Unconjugated
Other Names	WIF1;WIF-1
Accession No.	Swiss Prot:Q9Y5W5GeneID:11197
Calculated MW	41kDa
SDS-PAGE MW	42kDa
Formulation	Buffer: PBS with 0.02% sodium azide,50% glycerol,pH7.3.
Storage	Store at -20°C. Avoid freeze / thaw cycles.

Application Details

WB□1:2000 - 1:5000IHC□1:50 - 1:200

Images



Western blot analysis of extracts of mouse heart, using WIF1 at 1:1000 dilution.

Background

The protein encoded by this gene functions to inhibit WNT proteins, which are extracellular signaling molecules that play a role in embryonic development. This protein contains a WNT inhibitory factor (WIF) domain and five epidermal growth factor (EGF)-like domains, and is thought to be involved in mesoderm segmentation. This gene functions as a tumor suppressor gene, and has been found to be epigenetically silenced in various cancers.

Note: This product is for in vitro research use only and is not intended for use in humans or animals.