

Slug Rabbit Polyclonal Antibody

Catalog No: #53574

Package Size: #53574-1 50ul #53574-2 100ul

Orders: order@signalwayantibody.comSupport: tech@signalwayantibody.com

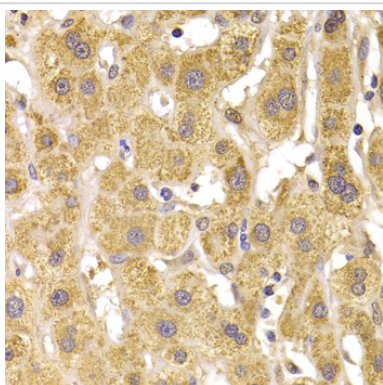
Description

Product Name	Slug Rabbit Polyclonal Antibody
Host Species	Rabbit
Clonality	Polyclonal
Isotype	IgG
Purification	Affinity purification
Applications	WB,IHC
Species Reactivity	Human;Mouse;Rat
Immunogen Description	Recombinant fusion protein of human Slug (NP_003059.1).
Conjugates	Unconjugated
Other Names	SNAIL2;SLUG;SLUGH;SLUGH1;SNAIL2;WS2D
Accession No.	Swiss Prot:O43623GeneID:6591
Calculated MW	29kDa
Formulation	Buffer: PBS with 0.02% sodium azide,50% glycerol,pH7.3.
Storage	Store at -20°C. Avoid freeze / thaw cycles.

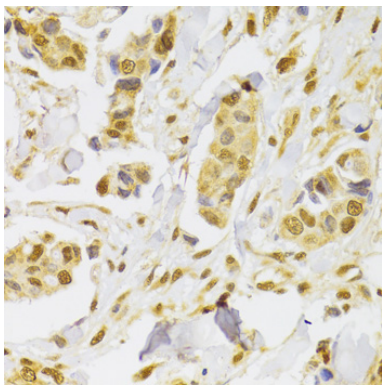
Application Details

WB□1:2000 - 1:5000IHC□1:50 - 1:200

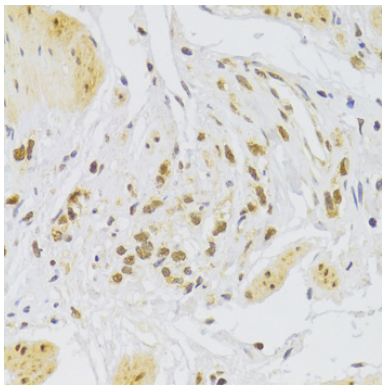
Images



Immunohistochemistry of paraffin-embedded human liver damage using Slug at dilution of 1:100 (40x lens).



Immunohistochemistry of paraffin-embedded human breast cancer using Slug at dilution of 1:100 (40x lens).



Immunohistochemistry of paraffin-embedded human stomach using Slug at dilution of 1:100 (40x lens).

Background

This gene encodes a member of the Snail family of C2H2-type zinc finger transcription factors. The encoded protein acts as a transcriptional repressor that binds to E-box motifs and is also likely to repress E-cadherin transcription in breast carcinoma. This protein is involved in epithelial-mesenchymal transitions and has antiapoptotic activity. Mutations in this gene may be associated with sporadic cases of neural tube defects.

Note: This product is for in vitro research use only and is not intended for use in humans or animals.