

# ATF3 Rabbit Polyclonal Antibody

Catalog No: #53615



Package Size: #53615-1 50ul #53615-2 100ul

Orders: [order@signalwayantibody.com](mailto:order@signalwayantibody.com)  
Support: [tech@signalwayantibody.com](mailto:tech@signalwayantibody.com)

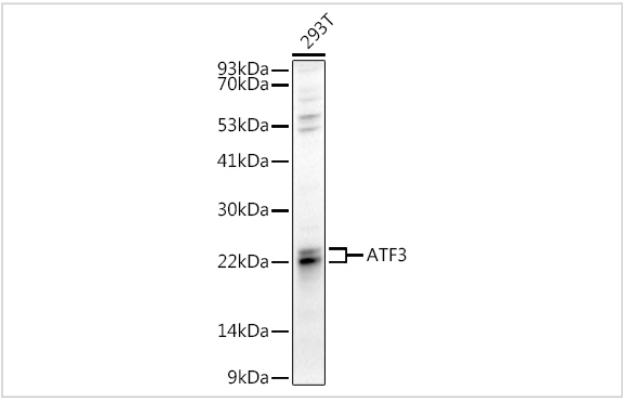
## Description

|                       |   |
|-----------------------|---|
| Product Name          | ATF3 Rabbit Polyclonal Antibody                         |
| Host Species          | Rabbit  |
| Clonality             | Polyclonal  |
| Isotype               | IgG   |
| Purification          | Affinity purification                                   |
| Applications          | WB,IHC,IF   |
| Species Reactivity    | Human;Mouse;Rat   |
| Immunogen Description | Recombinant fusion protein of human ATF3 (NP_001665.1). |
| Conjugates            | Unconjugated  |
| Other Names           | ATF3  |
| Accession No.         | Uniprot:P18847GenelD:467                                |
| Calculated MW         | 12kDa/13kDa/14kDa/15kDa/20kDa                           |
| SDS-PAGE MW           | 23KDa/24KDa   |
| Formulation           | PBS with 0.02% sodium azide,50% glycerol,pH7.3.         |
| Storage               | Store at -20°C. Avoid freeze / thaw cycles.             |

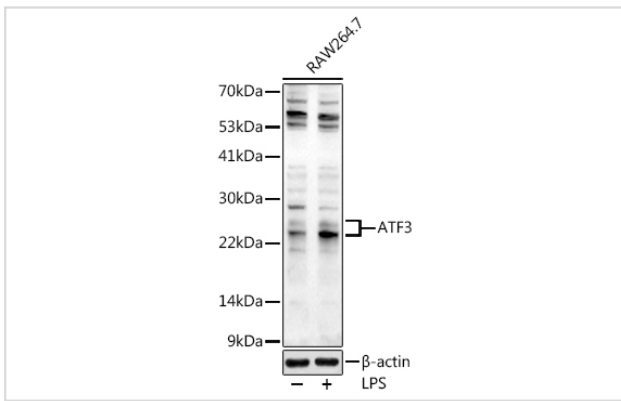
## Application Details

WB 1:500 - 1:2000IHC 1:50 - 1:200IF 1:50 - 1:200

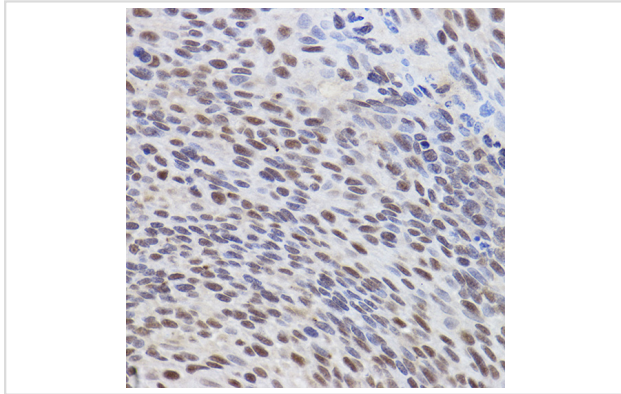
## Images



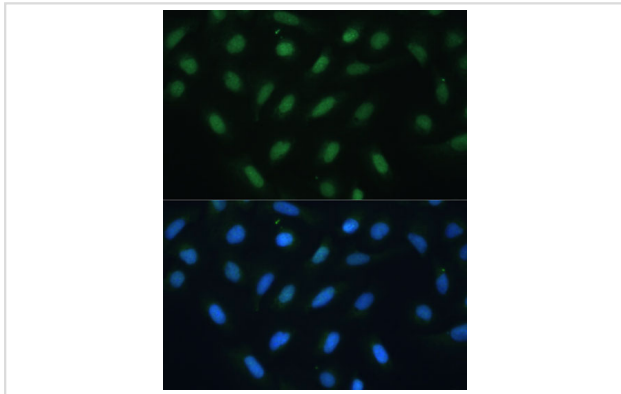
Western blot analysis of extracts of 293T cells, using ATF3 antibody.



Western blot analysis of extracts of RAW264.7 cells, using ATF3 antibody.



Immunohistochemistry of paraffin-embedded human lung cancer using ATF3 Rabbit pAb.



Immunofluorescence analysis of U-2 OS cells using ATF3 antibody.

## Background

This gene encodes a member of the mammalian activation transcription factor/cAMP responsive element-binding (CREB) protein family of transcription factors. This gene is induced by a variety of signals, including many of those encountered by cancer cells, and is involved in the complex process of cellular stress response. Multiple transcript variants encoding different isoforms have been found for this gene. It is possible that alternative splicing of this gene may be physiologically important in the regulation of target genes.

## Published Papers

el at., CDK4/6i enhances the antitumor effect of PD1 antibody by promoting TLS formation in ovarian cancer In Heliyon On 2023 Sep 14 by Wangyou Feng , Dongbo Jiang et al.. PMID:37809574, , (2023)

[PMID:37809574](https://pubmed.ncbi.nlm.nih.gov/37809574/)

Note: This product is for in vitro research use only and is not intended for use in humans or animals.