

ABCA1 Rabbit Polyclonal Antibody

Catalog No: #54186



Package Size: #54186-1 50ul #54186-2 100ul

Orders: order@signalwayantibody.com
Support: tech@signalwayantibody.com

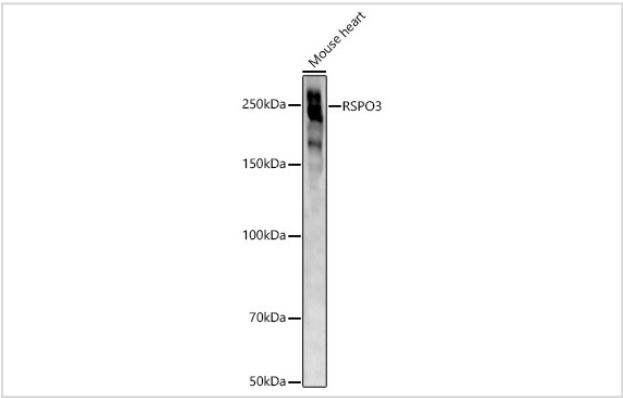
Description

Product Name	ABCA1 Rabbit Polyclonal Antibody
Host Species	Rabbit
Clonality	Polyclonal
Isotype	IgG
Purification	Affinity purification
Applications	WB;IF
Species Reactivity	Mouse
Immunogen Description	Recombinant fusion protein of human ABCA1 (NP_005493.2).
Conjugates	Unconjugated
Other Names	ABCA1;ABC-1;ABC1;CERP;HDLDT1;TGD
Accession No.	Swiss Prot:O95477GeneID:19
Calculated MW	254kDa
SDS-PAGE MW	270KDa
Formulation	Buffer: PBS with 0.02% sodium azide,50% glycerol,pH7.3.
Storage	Store at -20°C. Avoid freeze / thaw cycles.

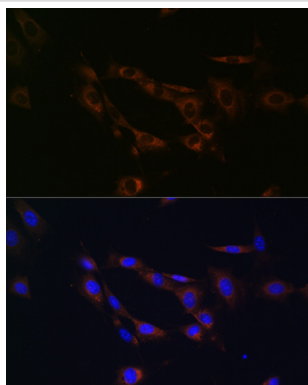
Application Details

WB 1:500 - 1:1000 IF/ICC 1:50 - 1:200

Images



Western blot analysis of lysates from Mouse heart, using ABCA1 Rabbit pAb at 1:1000 dilution.



Immunofluorescence analysis of NIH/3T3 cells using ABCA1 Rabbit pAb at dilution of 1:100 (40x lens).

Background

The membrane-associated protein encoded by this gene is a member of the superfamily of ATP-binding cassette (ABC) transporters. ABC proteins transport various molecules across extra- and intracellular membranes. ABC genes are divided into seven distinct subfamilies (ABC1, MDR/TAP, MRP, ALD, OABP, GCN20, White). This protein is a member of the ABC1 subfamily. Members of the ABC1 subfamily comprise the only major ABC subfamily found exclusively in multicellular eukaryotes. With cholesterol as its substrate, this protein functions as a cholesterol efflux pump in the cellular lipid removal pathway. Mutations in this gene have been associated with Tangier's disease and familial high-density lipoprotein deficiency.

Note: This product is for in vitro research use only and is not intended for use in humans or animals.