

TRIM16 Rabbit Polyclonal Antibody

Catalog No: #54441



Package Size: #54441-1 50ul #54441-2 100ul

Orders: order@signalwayantibody.com
Support: tech@signalwayantibody.com

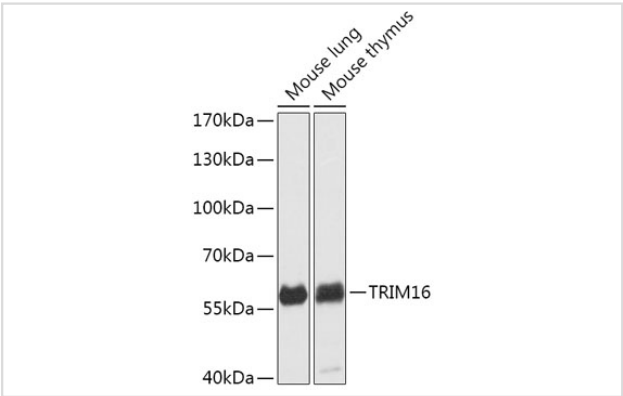
Description

Product Name	TRIM16 Rabbit Polyclonal Antibody
Host Species	Rabbit
Clonality	Polyclonal
Isotype	IgG
Purification	Affinity purification
Applications	WB,IHC,IF
Species Reactivity	Human;Mouse;Rat
Immunogen Description	Recombinant fusion protein of human TRIM16 (NP_006461.3).
Conjugates	Unconjugated
Other Names	EBBP;TRIM16
Accession No.	Swiss Prot:O95361GeneID:10626
Calculated MW	—
SDS-PAGE MW	64kDa
Formulation	Buffer: PBS with 0.02% sodium azide,50% glycerol,pH7.3.
Storage	Store at -20°C. Avoid freeze / thaw cycles.

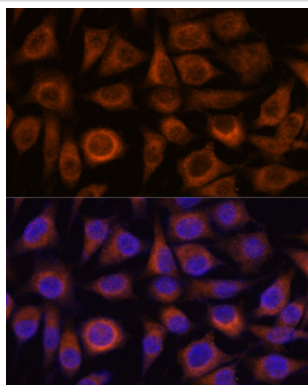
Application Details

WB 1:500 - 1:2000IHC 1:50 - 1:200IF 1:50 - 1:200

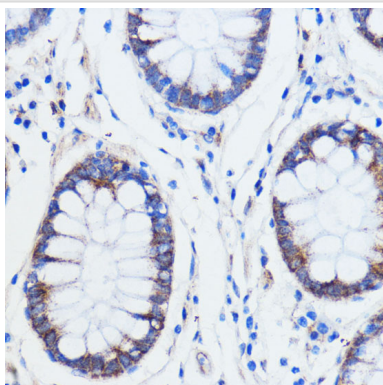
Images



Western blot analysis of extracts of various cell lines, using TRIM16 at 1:1000 dilution.



Immunofluorescence analysis of L929 cells using TRIM16 at dilution of 1:100. Blue: DAPI for nuclear staining.



Immunohistochemistry of paraffin-embedded human colon carcinoma using TRIM16 at dilution of 1:100 (40x lens).

Background

The protein encoded by this gene is a tripartite motif (TRIM) family member that contains two B box domains and a coiled-coiled region that are characteristic of the B box zinc finger protein family. While it lacks a RING domain found in other TRIM proteins, the encoded protein can homodimerize or heterodimerize with other TRIM proteins and has E3 ubiquitin ligase activity. This gene is also a tumor suppressor and is involved in secretory autophagy. [provided by RefSeq, Jan 2017]

Note: This product is for in vitro research use only and is not intended for use in humans or animals.