

Snail Rabbit Polyclonal Antibody

Catalog No: #54899



Package Size: #54899-1 50ul #54899-2 100ul

Orders: order@signalwayantibody.com
Support: tech@signalwayantibody.com

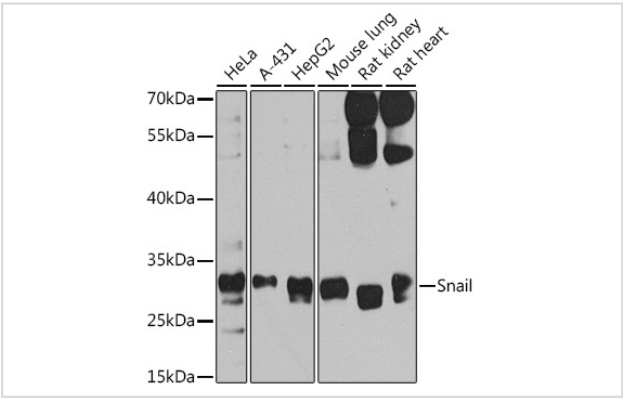
Description

Product Name	Snail Rabbit Polyclonal Antibody
Host Species	Rabbit
Clonality	Polyclonal
Isotype	IgG
Purification	Affinity purification
Applications	WB,IHC,IF
Species Reactivity	Human;Mouse;Rat
Immunogen Description	A synthetic peptide of human Snail (NP_005976.2).
Conjugates	Unconjugated
Other Names	SNAI1;SLUGH2;SNA;SNAH;SNAIL;SNAIL1;dJ710H13.1
Accession No.	Swiss Prot:O95863GeneID:6615
Calculated MW	29kDa
SDS-PAGE MW	29kDa
Formulation	Buffer: PBS with 0.02% sodium azide,50% glycerol,pH7.3.
Storage	Store at -20°C. Avoid freeze / thaw cycles.

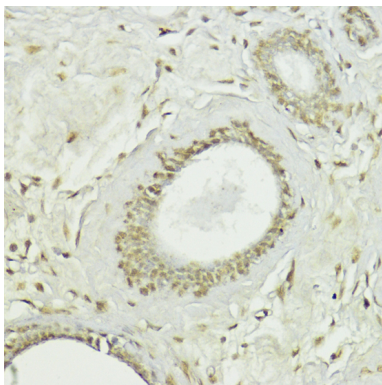
Application Details

WB 1:500 - 1:2000IHC 1:50 - 1:100IF 1:50 - 1:200

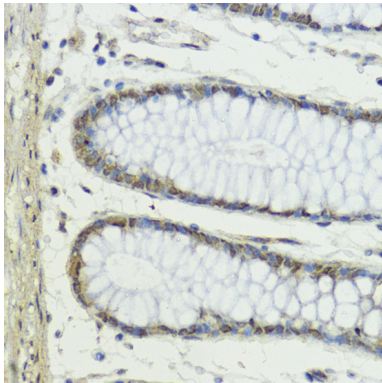
Images



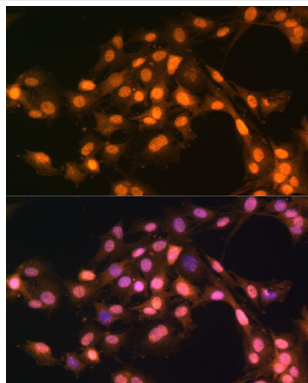
Western blot analysis of extracts of various cell lines, using Snail at 1:1000 dilution.



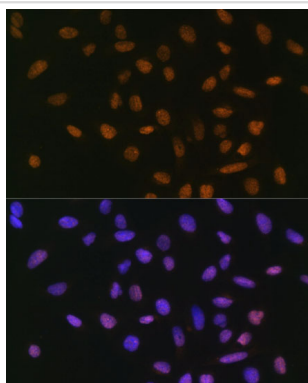
Immunohistochemistry of paraffin-embedded human breast using Snail at dilution of 1:100 (40x lens).



Immunohistochemistry of paraffin-embedded human colon using Snail at dilution of 1:100 (40x lens).



Immunofluorescence analysis of C6 cells using Snail at dilution of 1:100. Blue: DAPI for nuclear staining.



Immunofluorescence analysis of U-2 OS cells using Snail at dilution of 1:100. Blue: DAPI for nuclear staining.

Background

The *Drosophila* embryonic protein snail is a zinc finger transcriptional repressor which downregulates the expression of ectodermal genes within the mesoderm. The nuclear protein encoded by this gene is structurally similar to the *Drosophila* snail protein, and is also thought to be critical for mesoderm formation in the developing embryo. At least two variants of a similar processed pseudogene have been found on chromosome 2.

Note: This product is for in vitro research use only and is not intended for use in humans or animals.