

# CCL8 Rabbit Polyclonal Antibody

Catalog No: #55062

Package Size: #55062-1 50ul #55062-2 100ul

Orders: [order@signalwayantibody.com](mailto:order@signalwayantibody.com)Support: [tech@signalwayantibody.com](mailto:tech@signalwayantibody.com)

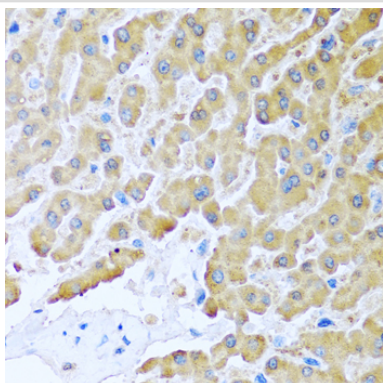
## Description

Product Name	CCL8 Rabbit Polyclonal Antibody
Host Species	Rabbit
Clonality	Polyclonal
Isotype	IgG
Purification	Affinity purification
Applications	WB,IHC,IF
Species Reactivity	Human;Mouse
Immunogen Description	Recombinant fusion protein of human CCL8 (NP_005614.2).
Conjugates	Unconjugated
Other Names	CCL8;HC14;MCP-2;MCP2;SCYA10;SCYA8
Accession No.	Swiss Prot:P80075GenelD:6355
Calculated MW	11kDa
Formulation	Buffer: PBS with 0.02% sodium azide,50% glycerol,pH7.3.
Storage	Store at -20°C. Avoid freeze / thaw cycles.

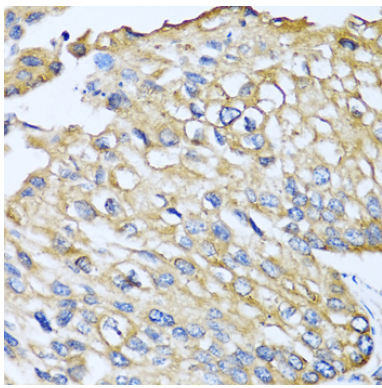
## Application Details

WB□1:500 - 1:2000IHC□1:50 - 1:100IF□1:50 - 1:100

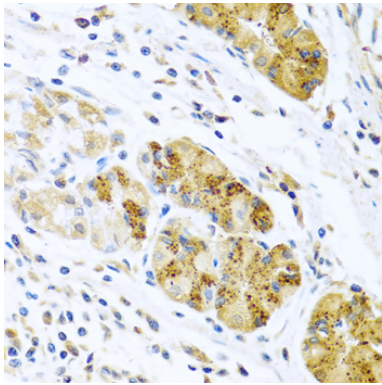
## Images



Immunohistochemistry of paraffin-embedded human liver using CCL8 at dilution of 1:100 (40x lens).



Immunohistochemistry of paraffin-embedded human prostate cancer using CCL8 at dilution of 1:100 (40x lens).



Immunohistochemistry of paraffin-embedded human stomach using CCL8 at dilution of 1:100 (40x lens).

## Background

This antimicrobial gene is one of several chemokine genes clustered on the q-arm of chromosome 17. Chemokines form a superfamily of secreted proteins involved in immunoregulatory and inflammatory processes. The superfamily is divided into four subfamilies based on the arrangement of N-terminal cysteine residues of the mature peptide. This chemokine is a member of the CC subfamily which is characterized by two adjacent cysteine residues. This cytokine displays chemotactic activity for monocytes, lymphocytes, basophils and eosinophils. By recruiting leukocytes to sites of inflammation this cytokine may contribute to tumor-associated leukocyte infiltration and to the antiviral state against HIV infection.

## Published Papers

Shuang Chen;Chensong Huang;Kang Li;Maosheng Cheng;Caihua Zhang;Jianqi Xiong;Guoli Tian;Ruoxing Zhou;Rongsong Ling;Xiaochen Wang;Gan Xiong;Zhihui Zhang;Jieyi Ma;Yan Zhu;Bin Zhou;Liang Peng;Zhenwei Peng;Heping Li;Demeng Chen et al., Tumor-initiating cells escape tumor immunity via CCL8 from tumor-associated macrophages in mice., , (2025)

[PMID:39774471](#)

**Note:** This product is for in vitro research use only and is not intended for use in humans or animals.