

PINK1 Rabbit Polyclonal Antibody

Catalog No: #55131



Package Size: #55131-1 50ul #55131-2 100ul

Orders: order@signalwayantibody.com
Support: tech@signalwayantibody.com

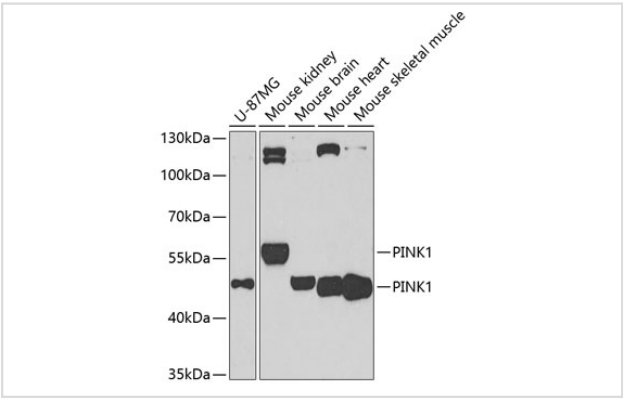
Description

Product Name	PINK1 Rabbit Polyclonal Antibody
Host Species	Rabbit
Clonality	Polyclonal
Isotype	IgG
Purification	Affinity purification
Applications	WB,IF
Species Reactivity	Human;Mouse;Rat
Immunogen Description	Recombinant fusion protein of human PINK1 (NP_115785.1).
Conjugates	Unconjugated
Other Names	PINK1;BRPK;PARK6
Accession No.	Swiss Prot:Q9BXM7GeneID:65018
Calculated MW	30kDa/62kDa
SDS-PAGE MW	46KD,60KD
Formulation	Buffer: PBS with 0.02% sodium azide,50% glycerol,pH7.3.
Storage	Store at -20°C. Avoid freeze / thaw cycles.

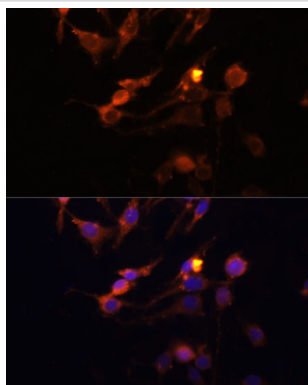
Application Details

WB 1:500 - 1:2000IF 1:50 - 1:200

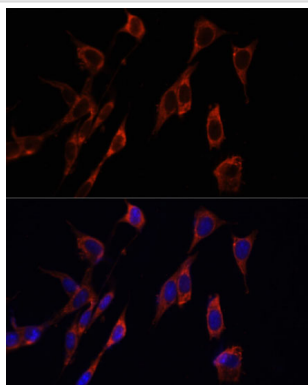
Images



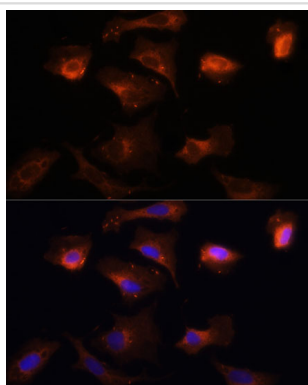
Western blot analysis of extracts of various cell lines, using PINK1 at 1:1000 dilution.



Immunofluorescence analysis of C6 cells using PINK1 Polyclonal at dilution of 1:100 (40x lens). Blue: DAPI for nuclear staining.



Immunofluorescence analysis of NIH-3T3 cells using PINK1 Polyclonal at dilution of 1:100 (40x lens). Blue: DAPI for nuclear staining.



Immunofluorescence analysis of U-2 OS cells using PINK1 Polyclonal at dilution of 1:100 (40x lens). Blue: DAPI for nuclear staining.

Background

This gene encodes a serine/threonine protein kinase that localizes to mitochondria. It is thought to protect cells from stress-induced mitochondrial dysfunction. Mutations in this gene cause one form of autosomal recessive early-onset Parkinson disease.

Note: This product is for in vitro research use only and is not intended for use in humans or animals.