

TAF15 Rabbit Polyclonal Antibody

Catalog No: #55523



Package Size: #55523-1 50ul #55523-2 100ul

Orders: order@signalwayantibody.com
Support: tech@signalwayantibody.com

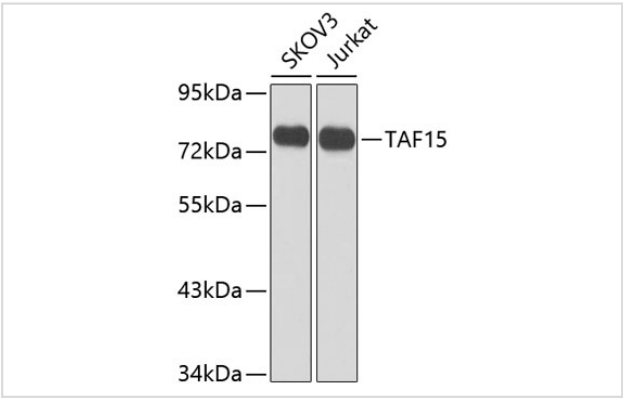
Description

Product Name	TAF15 Rabbit Polyclonal Antibody
Host Species	Rabbit
Clonality	Polyclonal
Isotype	IgG
Purification	Affinity purification
Applications	WB,IHC,IF
Species Reactivity	Human
Immunogen Description	Recombinant fusion protein of human TAF15 (NP_631961.1).
Conjugates	Unconjugated
Other Names	TAF15;Npl3;RBP56;TAF2N;TAFII68
Accession No.	Uniprot:Q92804GeneID:8148
Calculated MW	61kDa
SDS-PAGE MW	80kDa
Formulation	PBS with 0.02% sodium azide,50% glycerol,pH7.3.
Storage	Store at -20°C. Avoid freeze / thaw cycles.

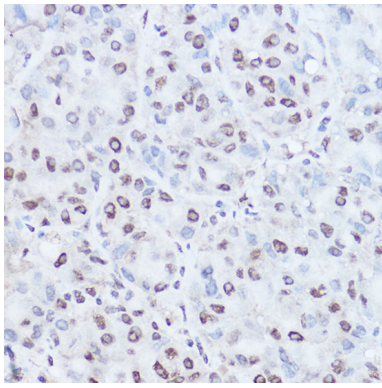
Application Details

WB 1:500 - 1:2000IHC 1:50 - 1:100IF 1:50 - 1:200

Images



Western blot analysis of extracts of various cell lines, using TAF15 antibody.



Immunohistochemistry of paraffin-embedded human liver cancer using TAF15 Rabbit pAb.

Background

This gene encodes a member of the TET family of RNA-binding proteins. The encoded protein plays a role in RNA polymerase II gene transcription as a component of a distinct subset of multi-subunit transcription initiation factor TFIID complexes. Translocations involving this gene play a role in acute leukemia and extraskeletal myxoid chondrosarcoma, and mutations in this gene may play a role in amyotrophic lateral sclerosis. Alternatively spliced transcript variants encoding multiple isoforms have been observed for this gene.

Published Papers

Liu Chong, Xie Qing, Xu Jun-Ping, Hua Kai-Ye, Zhao Wei-Jiang et al., Neuregulin 2 reversed astrocytosis in the spinal cord in a mouse model of Alzheimer's disease, *Folia neuropathologica*, (2025)

[PMID:40755338](#)

Note: This product is for in vitro research use only and is not intended for use in humans or animals.