

## ErbB2 (HER2) Rabbit mAb

Catalog No: #56035



Package Size: #56035-1 50ul #56035-2 100ul

Orders: order@signalwayantibody.com

Support: tech@signalwayantibody.com

## Description

Product Name	ErbB2 (HER2) Rabbit mAb
Host Species	Recombinant Rabbit
Clonality	Monoclonal
Isotype	Rabbit IgG
Purification	Affinity-chromatography
Applications	WB IHC ICC/IF
Species Reactivity	Human
Specificity	ErbB2 (HER2) Antibody detects endogenous levels of total ErbB (HER2)
Immunogen Description	A synthesized peptide derived from human ErbB2 (HER2)
Conjugates	Unconjugated
Other Names	C-erbB-2; ErbB2; HER2, MLN 19; NEU; NEU proto-oncogene; NGL; Receptor protein-tyrosine kinase erbB-2;
Accession No.	Uniprot:P04626
Calculated MW	138kDa
SDS-PAGE MW	185kDa
Formulation	Rabbit IgG in phosphate buffered saline , pH 7.4, 150mM NaCl, 0.02% sodium azide and 50% glycerol.
Storage	Store at +4°C short term. Store at -20°C long term. Avoid freeze / thaw cycle.

## Application Details

WB:1:500~1:2000

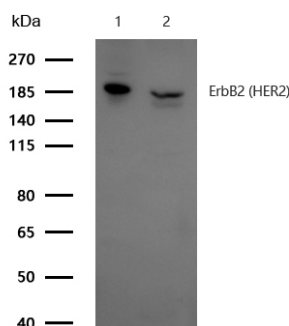
IHC:1:50~1:200

ICC/IF:1:50~1:200

IP:1:50

FC:1:50

## Images



All lanes: ErbB2 (HER2) Rabbit mAb at 1/1k dilution

Lane 1 : SKBR-3 whole cell lysates

Lane 2 : 293 whole cell lysates

Lysates/proteins at 20 µg per lane.

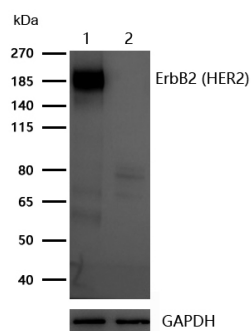
Secondary

All lanes : Goat Anti-Rabbit IgG H&amp;L (HRP) at 1/20000 dilution

Predicted band size: 138 kDa

Observed band size: 185 kDa

Exposure time: 11 seconds

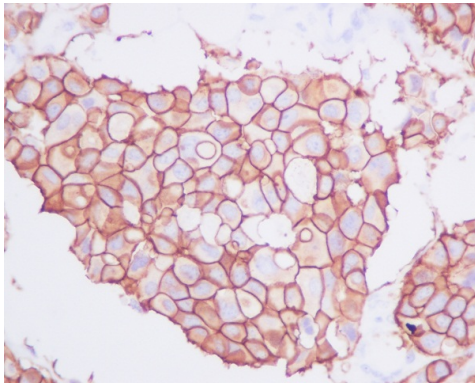


All lanes: ErbB2 (HER2) Rabbit mAb at 1/1k dilution

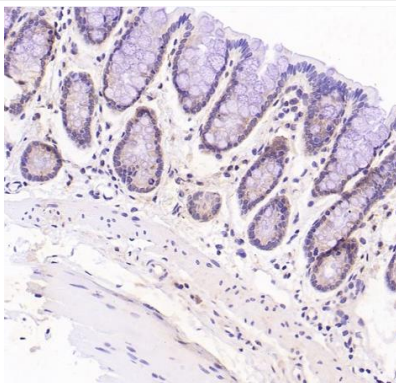
Lane 1 : Wild-type 293T cell lysate

Lane 2 : ErbB2 (HER2) knockdown 293T cell lysate

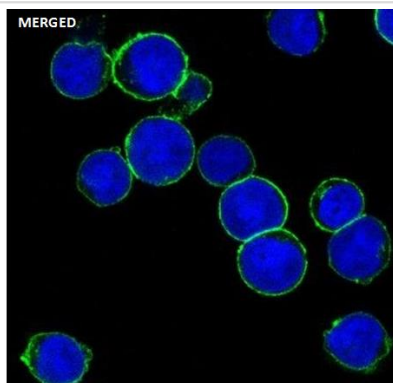
Lysates/proteins at 20 µg per lane.



Formalin-fixed, paraffin-embedded human breast carcinoma tissue stained for ErbB2 (HER2) using 56035 at 1/100 dilution in immunohistochemical analysis.



Formalin-fixed, paraffin-embedded rat stomach tissue stained for ErbB2 (HER2) using 56035 at 1/100 dilution in immunohistochemical analysis.



Immunocytochemistry/ Immunofluorescence ErbB2 (HER2) antibody (56035) ICC/IF staining of ErbB2 (HER2) in SKBR cells. Cells were fixed with 4% Paraformaldehyde permeabilized with 0.1% Triton X-100.

Samples were incubated with 56035 at a working dilution of 1/100. The secondary antibody was Alexa FluorB 488 goat anti rabbit, used at a dilution of 1/500.

Nuclei were counterstained with DAPI.

## Product Description

This gene encodes a member of the epidermal growth factor (EGF) receptor family of receptor tyrosine kinases. This protein has no ligand binding domain of its own and therefore cannot bind growth factors. However, it does bind tightly to other ligand-bound EGF receptor family members to form a heterodimer, stabilizing ligand binding and enhancing kinase-mediated activation of downstream signalling pathways, such as those involving mitogen-activated protein kinase and phosphatidylinositol-3 kinase.

---

Note: This product is for in vitro research use only and is not intended for use in humans or animals.