

S6K1 Rabbit mAb

Catalog No: #56055

Package Size: #56055-1 50ul #56055-2 100ul

Orders: order@signalwayantibody.comSupport: tech@signalwayantibody.com

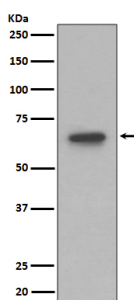
Description

Product Name	S6K1 Rabbit mAb
Host Species	Recombinant Rabbit
Clonality	Monoclonal
Isotype	Rabbit IgG
Purification	Affinity-chromatography
Applications	WB IHC IP
Species Reactivity	Human;Mouse;Rat
Specificity	S6K1 Antibody detects endogenous levels of total S6K1
Immunogen Description	A synthesized peptide derived from human S6K1
Conjugates	Unconjugated
Other Names	EC 2.7.11.1; KS6B1; P70-S6K; RPS6KB1; Ribosomal protein S6 kinase, Ribosomal protein S6 kinase 70kDa polypeptide 1; S6K1; kinase p70S6K; p70-S6K;
Accession No.	Uniprot:P23443
Calculated MW	70kDa
Formulation	Rabbit IgG in phosphate buffered saline , pH 7.4, 150mM NaCl, 0.02% sodium azide and 50% glycerol.
Storage	Store at +4°C short term. Store at -20°C long term. Avoid freeze / thaw cycle.

Application Details

WB:1:500~1:2000IHC:1:50~1:200IP:1:50

Images



Western blot analysis of S6K1 expression in 293T cell lysate.

Product Description

This gene encodes a member of the RSK (ribosomal S6 kinase) family of serine/threonine kinases. This kinase contains 2 non-identical kinase catalytic domains and phosphorylates several residues of the S6 ribosomal protein.

Note: This product is for in vitro research use only and is not intended for use in humans or animals.