

p21 Rabbit mAb

Catalog No: #56088



Package Size: #56088-1 50ul #56088-2 100ul

Orders: order@signalwayantibody.com
Support: tech@signalwayantibody.com

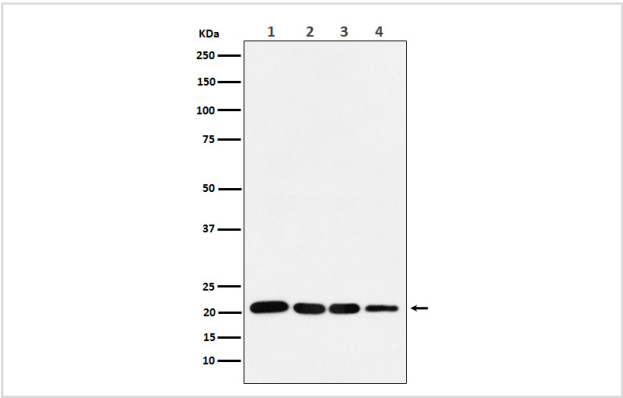
Description

Product Name	p21 Rabbit mAb
Host Species	Recombinant Rabbit
Clonality	Monoclonal
Isotype	Rabbit IgG
Purification	Affinity-chromatography
Applications	WB ICC/IF
Species Reactivity	Human;Mouse;Rat
Specificity	p21 Antibody detects endogenous levels of total p21
Immunogen Description	A synthesized peptide derived from human p21
Conjugates	Unconjugated
Other Names	CAP20; CDKN1; CIP1; MDA-6; P21; SDI1; WAF1; p21CIP1
Accession No.	Uniprot:P38936
Calculated MW	21kDa
Formulation	Rabbit IgG in phosphate buffered saline , pH 7.4, 150mM NaCl, 0.02% sodium azide and 50% glycerol.
Storage	Store at +4°C short term. Store at -20°C long term. Avoid freeze / thaw cycle.

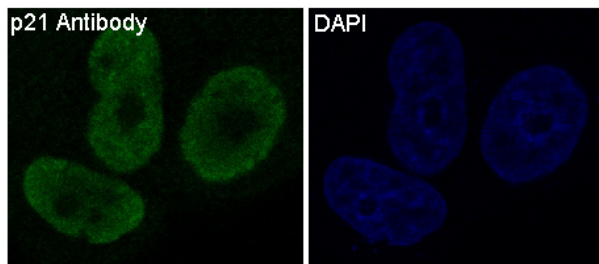
Application Details

WB:1:500~1:2000ICC/IF:1:50~1:200

Images



Western blot analysis of p21 in (1) MCF-7 cell lysate; (2) HeLa cell lysate. (3) LnCap cell lysate; (4) U87 MG cell lysate.



Immunofluorescent analysis of MCF7 cells, using p21 Antibody.

Product Description

The tumor suppressor protein p21 Waf1/Cip1 acts as an inhibitor of cell cycle progression. It functions in stoichiometric relationships forming heterotrimeric complexes with cyclins and cyclin-dependent kinases. In association with CDK2 complexes, it serves to inhibit kinase activity and block progression through G1/S. However, p21 may also enhance assembly and activity in complexes of CDK4 or CDK6 and cyclin D.

Note: This product is for in vitro research use only and is not intended for use in humans or animals.