

## EEA1 Rabbit mAb

Catalog No: #56094



Package Size: #56094-1 50ul #56094-2 100ul

Orders: [order@signalwayantibody.com](mailto:order@signalwayantibody.com)Support: [tech@signalwayantibody.com](mailto:tech@signalwayantibody.com)

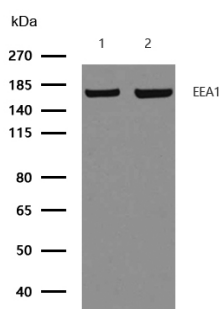
## Description

Product Name	EEA1 Rabbit mAb
Host Species	Recombinant Rabbit
Clonality	Monoclonal
Isotype	Rabbit IgG
Purification	Affinity-chromatography
Applications	WB ICC/IF
Species Reactivity	Human;Mouse;Rat
Specificity	EEA1 Antibody detects endogenous levels of total EEA1
Immunogen Description	A synthesized peptide derived from human EEA1
Conjugates	Unconjugated
Other Names	Early endosome antigen 1; EEA1; MST105; ZFYVE2;
Accession No.	Uniprot:Q15075
Calculated MW	162 kDa
SDS-PAGE MW	170 kDa
Formulation	Rabbit IgG in phosphate buffered saline , pH 7.4, 150mM NaCl, 0.02% sodium azide and 50% glycerol.
Storage	Store at +4°C short term. Store at -20°C long term. Avoid freeze / thaw cycle.

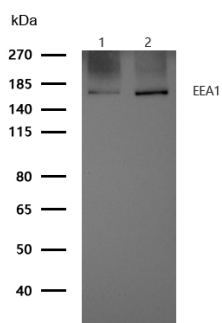
## Application Details

WB:1:500~1:2000 ICC/IF:1:50~1:200

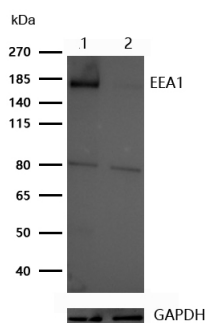
## Images



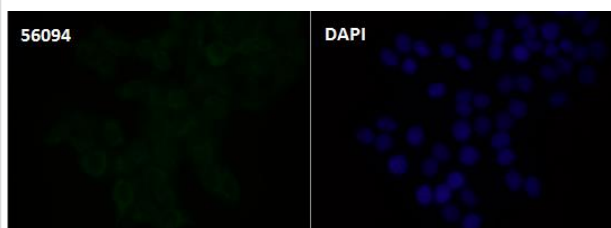
All lanes: EEA1 Rabbit mAb at 1/1k dilution  
 Lane 1 : HeLa whole cell lysates  
 Lane 2 : 3T3 whole cell lysates  
 Lysates/proteins at 20 µg per lane.  
 Secondary: All lanes : Goat Anti-Rabbit IgG H&L (HRP) at 1/20000 dilution  
 Predicted band size: 162 kDa  
 Observed band size: 170 kDa  
 Exposure time: 6 seconds



All lanes: EEA1 Rabbit mAb at 1/1k dilution  
 Lane 1 : 293 whole cell lysates  
 Lane 2 : C6 whole cell lysates  
 Lysates/proteins at 20 µg per lane.  
 Secondary: Goat Anti-Rabbit IgG H&L (HRP) at 1/20000 dilution  
 Predicted band size: 162 kDa  
 Observed band size: 170 kDa  
 Exposure time: 5 seconds



All lanes : EEA1 Rabbit mAb at 1/1k dilution  
 Lane 1 : Wild-type HAP1 cell lysate  
 Lane 2 : EEA1 knockdown HAP1 cell lysate  
 Lysates/proteins at 20 µg per lane.



Immunocytochemistry/ Immunofluorescence EEA1 antibody (48112)  
 ICC/IF staining of EEA1 in HeLa cells. Cells were fixed with 4% Paraformaldehyde permeabilized with 0.1% Triton X-100.

Samples were incubated with 48112 at a working dilution of 1/100. The secondary antibody was Alexa FluorB 488 goat anti rabbit, used at a dilution of 1/500.

Nuclei were counterstained with DAPI.

## Product Description

EEA1 is an early endosomal marker and a Rab5 effector protein essential for early endosomal membrane fusion and trafficking (1-2). The carboxy terminus of EEA1 contains a FYVE domain which binds to phosphatidylinositol-3-phosphate (PtdIns(3)P), targeting EEA1 to early endosomes (3). The stable association of EEA1 with the endosomal membrane is regulated by PI3 kinase, Rab5 and calcium/calmodulin (4-6). Once on the membrane, EEA1 interacts with Rab5, NSF and syntaxin 13 to promote early endosomal membrane docking and fusion (7).

**Note:** This product is for in vitro research use only and is not intended for use in humans or animals.