

Cdc25C Rabbit mAb

Catalog No: #56114

Package Size: #56114-1 50ul #56114-2 100ul

Orders: order@signalwayantibody.comSupport: tech@signalwayantibody.com

Description

Product Name	Cdc25C Rabbit mAb
Host Species	Recombinant Rabbit
Clonality	Monoclonal
Isotype	Rabbit IgG
Purification	Affinity-chromatography
Applications	WB IHC ICC/IF
Species Reactivity	Human
Specificity	Cdc25C Antibody detects endogenous levels of total Cdc25C
Immunogen Description	A synthesized peptide derived from human Cdc25C
Conjugates	Unconjugated
Other Names	CDC25; CDC25C; Cell division cycle 25 homolog C; MPIP3; PPP1R60;
Accession No.	Uniprot:P30307
Calculated MW	53kDa
SDS-PAGE MW	60kDa
Formulation	Rabbit IgG in phosphate buffered saline , pH 7.4, 150mM NaCl, 0.02% sodium azide and 50% glycerol.
Storage	Store at +4°C short term. Store at -20°C long term. Avoid freeze / thaw cycle.

Application Details

WB:1:500~1:2000

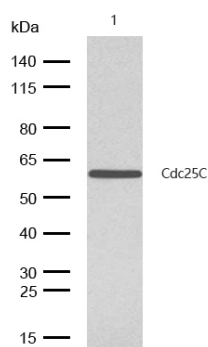
IHC:1:10~1:500

ICC/IF:1:50~1:200

IP:1:30

FC:1:50

Images



All lanes: Cdc25C Rabbit mAb at 1/1k dilution

Lane 1 : K562 whole cell lysates

Lysates/proteins at 20 µg per lane.

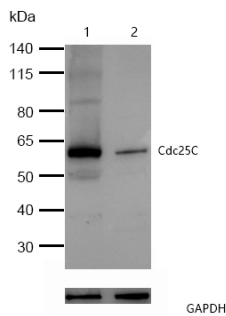
Secondary

All lanes : Goat Anti-Rabbit IgG H&L (HRP) at 1/20000 dilution

Predicted band size: 53 kDa

Observed band size: 60 kDa

Exposure time: 4 seconds

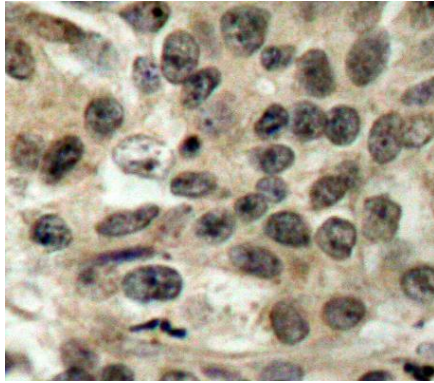


All lanes :Cdc25C Rabbit mAb at 1/1k dilution

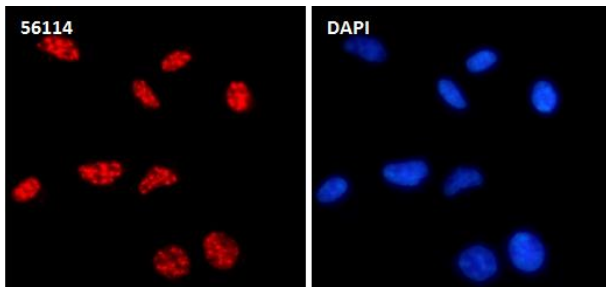
Lane 1 : Wild-type HAP1 cell lysate

Lane 2 : Cdc25C knockdown HAP1 cell lysate

Lysates/proteins at 20 µg per lane.



Formalin-fixed, paraffin-embedded human breast carcinoma tissue stained for Cdc25C using 56114 at 1/100 dilution in immunohistochemical analysis.



Immunocytochemistry/ Immunofluorescence Cdc25C antibody (56114) ICC/IF staining of Cdc25C in 293T cells. Cells were fixed with 4% Paraformaldehyde permeabilized with 0.1% Triton X-100.

Samples were incubated with 56114 at a working dilution of 1/100. The secondary antibody was Alexa FluorB 647 goat anti rabbit, used at a dilution of 1/500.

Nuclei were counterstained with DAPI.

Product Description

Functions as a dosage-dependent inducer in mitotic control. It is a tyrosine protein phosphatase required for progression of the cell cycle. It directly dephosphorylates CDK1 and activate its kinase activity.

Note: This product is for in vitro research use only and is not intended for use in humans or animals.