

TGF beta 1 Rabbit mAb

Catalog No: #56126



Package Size: #56126-1 50ul #56126-2 100ul

Orders: order@signalwayantibody.com

Support: tech@signalwayantibody.com

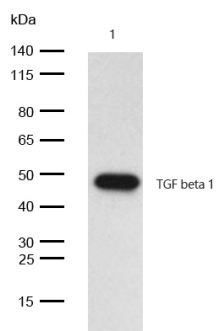
Description

Product Name	TGF beta 1 Rabbit mAb
Host Species	Recombinant Rabbit
Clonality	Monoclonal
Isotype	Rabbit IgG
Purification	Affinity-chromatography
Applications	WB
Species Reactivity	Human
Specificity	TGF beta 1 Antibody detects endogenous levels of total TGF beta 1
Immunogen Description	A synthesized peptide derived from human TGF beta 1
Conjugates	Unconjugated
Other Names	CED; diaphyseal dysplasia 1, progressive; DPD1; TGF-beta 1; TGFB1;
Accession No.	Uniprot:P01137
Calculated MW	44kDa
SDS-PAGE MW	48kDa
Formulation	Rabbit IgG in phosphate buffered saline , pH 7.4, 150mM NaCl, 0.02% sodium azide and 50% glycerol.
Storage	Store at +4°C short term. Store at -20°C long term. Avoid freeze / thaw cycle.

Application Details

WB:1:500~1:2000

Images



All lanes: TGF beta 1 Rabbit mAb at 1/1k dilution

Lane 1 : A549 whole cell lysates

Lysates/proteins at 20 µg per lane.

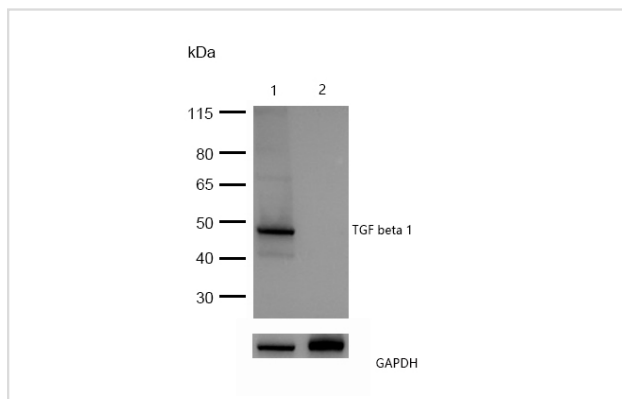
Secondary

All lanes : Goat Anti-Rabbit IgG H&L (HRP) at 1/20000 dilution

Predicted band size: 44 kDa

Observed band size: 48 kDa

Exposure time: 6 seconds



All lanes: TGF beta 1 Rabbit mAb at 1/1k dilution

Lane 1 : Wild-type HeLa cell lysate

Lane 2 : TGF beta 1 knockdown HeLa cell lysate

Lysates/proteins at 20 µg per lane.

Product Description

Multifunctional protein that controls proliferation, differentiation and other functions in many cell types. Many cells synthesize TGFB1 and have specific receptors for it. It positively and negatively regulates many other growth factors. It plays an important role in bone remodeling as it is a potent stimulator of osteoblastic bone formation, causing chemotaxis, proliferation and differentiation in committed osteoblasts.

Note: This product is for in vitro research use only and is not intended for use in humans or animals.