

Cathepsin L/V/K/H Rabbit mAb

Catalog No: #56147



Package Size: #56147-1 50ul #56147-2 100ul

Orders: order@signalwayantibody.comSupport: tech@signalwayantibody.com

Description

Product Name	Cathepsin L/V/K/H Rabbit mAb
Host Species	Recombinant Rabbit
Clonality	Monoclonal
Isotype	Rabbit IgG
Purification	Affinity-chromatography
Applications	WB IHC ICC/IF
Species Reactivity	Human;Mouse;Rat
Specificity	Cathepsin L/V/K/H Antibody detects endogenous levels of total Cathepsin L/V/K/H
Immunogen Description	A synthesized peptide derived from human Cathepsin L/V/K/H
Conjugates	Unconjugated
Other Names	Cathepsin; CTSL; CTSV; CTSK; CTSH;
Accession No.	Uniprot:P07711/O60911/P43235/P09668
Calculated MW	37,38kDa
SDS-PAGE MW	38kDa
Formulation	Rabbit IgG in phosphate buffered saline , pH 7.4, 150mM NaCl, 0.02% sodium azide and 50% glycerol.
Storage	Store at +4°C short term. Store at -20°C long term. Avoid freeze / thaw cycle.

Application Details

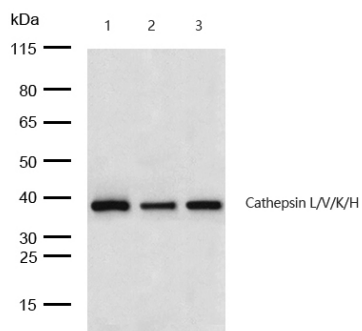
WB:1:500~1:2000

IHC:1:50~1:200

ICC/IF:1:50~1:200

FC:1:50

Images



All lanes: Cathepsin L/V/K/H Rabbit mAb at 1/1k dilution

Lane 1 : HepG2 whole cell lysates Lane 2 : 3T3 whole cell lysates Lane 3 : PC12 whole cell lysates

Lysates/proteins at 20 µg per lane.

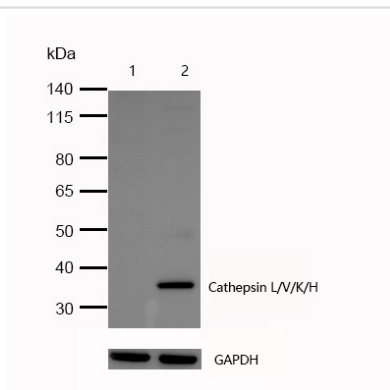
Secondary

All lanes : Goat Anti-Rabbit IgG H&L (HRP) at 1/20000 dilution

Predicted band size: 37,38 kDa

Observed band size: 38 kDa

Exposure time: 7 seconds

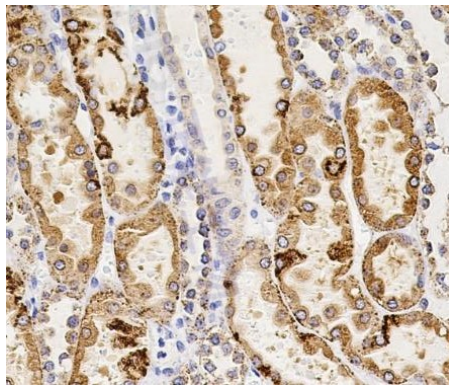


All lanes: Cathepsin L/V/K/H Rabbit mAb at 1/1k dilution

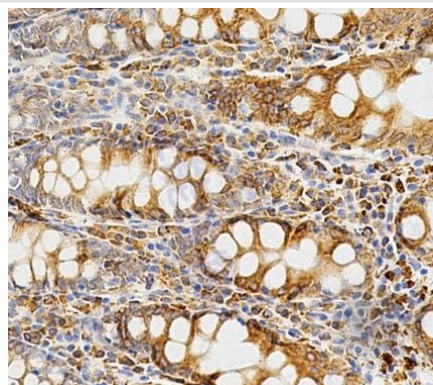
Lane 1 : Cathepsin L/V/K/H knockdown HeLa cell lysate

Lane 2 : Wild-type HeLa cell lysate

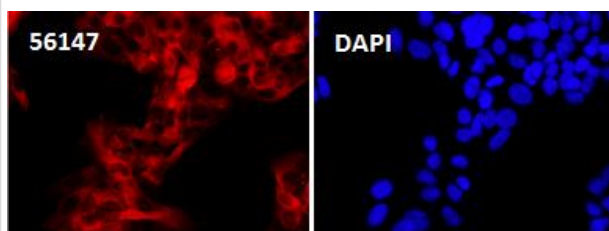
Lysates/proteins at 20 µg per lane.



Formalin-fixed, paraffin-embedded human kidney tissue stained for Cathepsin L/V/K/H using 56147 at 1/100 dilution in immunohistochemical analysis.



Formalin-fixed, paraffin-embedded human colon tissue stained for Cathepsin L/V/K/H using 56147 at 1/100 dilution in immunohistochemical analysis.



Immunocytochemistry/ Immunofluorescence Cathepsin L/V/K/H antibody (56147) ICC/IF staining of Cathepsin L/V/K/H in U-118 MG cells. Cells were fixed with 4% Paraformaldehyde permeabilized with 0.1% Triton X-100.

Samples were incubated with 56147 at a working dilution of 1/100. The secondary antibody was Alexa FluorB 647 goat anti rabbit, used at a dilution of 1/500.

Nuclei were counterstained with DAPI.

Product Description

Closely involved in osteoclastic bone resorption and may participate partially in the disorder of bone remodeling. Displays potent endoprotease activity against fibrinogen at acid pH. May play an important role in extracellular matrix degradation.

Note: This product is for in vitro research use only and is not intended for use in humans or animals.