

Calpain 1 Rabbit mAb

Catalog No: #56175

Package Size: #56175-1 50ul #56175-2 100ul

Orders: order@signalwayantibody.com

Support: tech@signalwayantibody.com

Description

Product Name	Calpain 1 Rabbit mAb
Host Species	Recombinant Rabbit
Clonality	Monoclonal
Isotype	Rabbit IgG
Purification	Affinity-chromatography
Applications	WB IHC ICC/IF
Species Reactivity	Human;Mouse;Rat
Specificity	Calpain 1 Antibody detects endogenous levels of total Calpain 1
Immunogen Description	A synthesized peptide derived from human Calpain 1
Conjugates	Unconjugated
Other Names	Calpain-1 catalytic subunit; CANP; CANP small subunit; CANPL1; CAPN1; Micromolar Calpain; Mu Calpain; muCANP;
Accession No.	Uniprot:P07384
Calculated MW	82kDa
SDS-PAGE MW	75,80kDa
Formulation	Rabbit IgG in phosphate buffered saline , pH 7.4, 150mM NaCl, 0.02% sodium azide and 50% glycerol.
Storage	Store at +4°C short term. Store at -20°C long term. Avoid freeze / thaw cycle.

Application Details

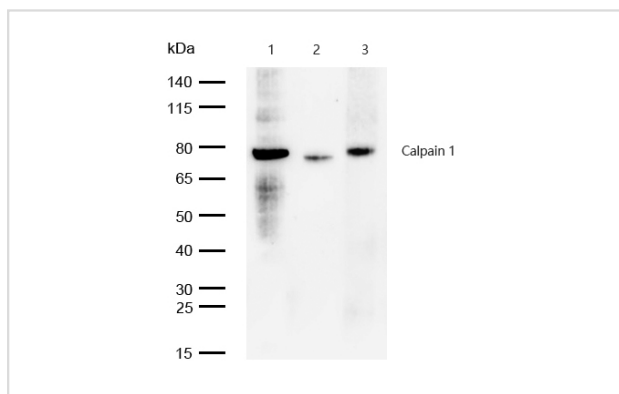
WB:1:500~1:2000

IHC:1:50~1:200

ICC/IF:1:50~1:200

FC:1:100

Images



All lanes: Calpain 1 Rabbit mAb at 1/1k dilution

Lane 1 : K562 whole cell lysates Lane 2 : U937 whole cell lysates Lane 3 : THP-1 whole cell lysates

Lysates/proteins at 20 µg per lane.

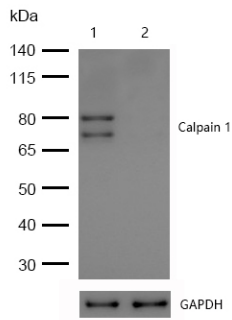
Secondary

All lanes : Goat Anti-Rabbit IgG H&L (HRP) at 1/20000 dilution

Predicted band size: 82 kDa

Observed band size: 75,80 kDa

Exposure time: 9 seconds

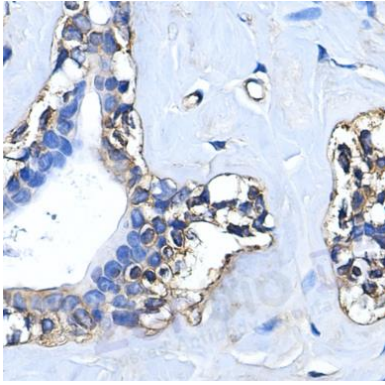


All lanes: Calpain 1 Rabbit mAb at 1/1k dilution

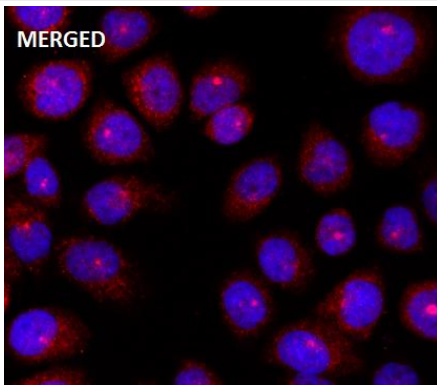
Lane 1 : Wild-type HCT116 cell lysate

Lane 2 : Calpain 1 knockdown HCT116 cell lysate

Lysates/proteins at 20 µg per lane.



Formalin-fixed, paraffin-embedded human breast tissue stained for Calpain 1 using 56175 at 1/100 dilution in immunohistochemical analysis.



Immunocytochemistry/ Immunofluorescence Calpain 1 antibody (56175) ICC/IF staining of Calpain 1 in MCF-7 cells. Cells were fixed with 4% Paraformaldehyde permeabilized with 0.1% Triton X-100.

Samples were incubated with 56175 at a working dilution of 1/100. The secondary antibody was Alexa FluorB 647 goat anti rabbit, used at a dilution of 1/500.

Nuclei were counterstained with DAPI.

Product Description

Calcium-regulated non-lysosomal thiol-protease which catalyze limited proteolysis of substrates involved in cytoskeletal remodeling and signal transduction.

Note: This product is for in vitro research use only and is not intended for use in humans or animals.