

## CD276 Rabbit mAb

Catalog No: #56177



Package Size: #56177-1 50ul #56177-2 100ul

Orders: [order@signalwayantibody.com](mailto:order@signalwayantibody.com)Support: [tech@signalwayantibody.com](mailto:tech@signalwayantibody.com)

## Description

Product Name	CD276 Rabbit mAb
Host Species	Recombinant Rabbit
Clonality	Monoclonal
Isotype	Rabbit IgG
Purification	Affinity-chromatography
Applications	WB
Species Reactivity	Human
Specificity	CD276 Antibody detects endogenous levels of total CD276
Immunogen Description	A synthesized peptide derived from human CD276
Conjugates	Unconjugated
Other Names	4Ig B7 H3; B7 homolog 3; B7H3; B7RP-2; CD276 antigen; CD276 molecule;
Accession No.	Uniprot:Q5ZPR3
Calculated MW	57kDa
SDS-PAGE MW	100kDa
Formulation	Rabbit IgG in phosphate buffered saline , pH 7.4, 150mM NaCl, 0.02% sodium azide and 50% glycerol.
Storage	Store at +4°C short term. Store at -20°C long term. Avoid freeze / thaw cycle.

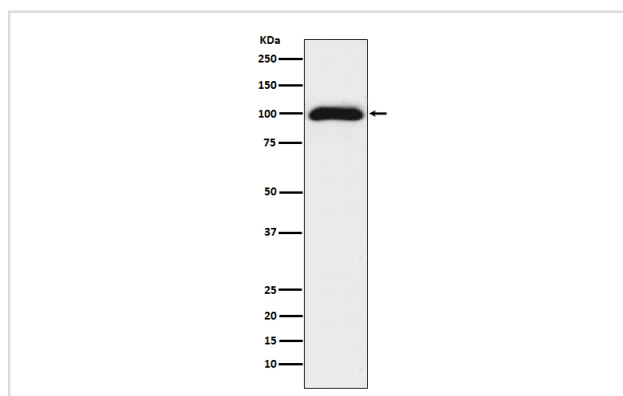
## Application Details

WB:1:500~1:2000

IP:1:50

FC:1:200

## Images



Western blot analysis of CD276 expression in 293T cell lysate.

## Product Description

May participate in the regulation of T-cell-mediated immune response. May play a protective role in tumor cells by inhibiting natural-killer mediated cell

lysis as well as a role of marker for detection of neuroblastoma cells. May be involved in the development of acute and chronic transplant rejection and in the regulation of lymphocytic activity at mucosal surfaces.

---

Note: This product is for in vitro research use only and is not intended for use in humans or animals.