

## Emerin Rabbit mAb

Catalog No: #56235

Package Size: #56235-1 50ul #56235-2 100ul

Orders: [order@signalwayantibody.com](mailto:order@signalwayantibody.com)Support: [tech@signalwayantibody.com](mailto:tech@signalwayantibody.com)

## Description

Product Name	Emerin Rabbit mAb
Host Species	Recombinant Rabbit
Clonality	Monoclonal
Isotype	Rabbit IgG
Purification	Affinity-chromatography
Applications	WB IHC ICC/IF
Species Reactivity	Human;Mouse;Rat
Specificity	Emerin Antibody detects endogenous levels of total Emerin
Immunogen Description	A synthesized peptide derived from human Emerin
Conjugates	Unconjugated
Other Names	EDMD; Emd; Emerin; Emery Dreifuss muscular dystrophy; STA;
Accession No.	Uniprot:P50402
Calculated MW	29kDa
SDS-PAGE MW	29kDa
Formulation	Rabbit IgG in phosphate buffered saline , pH 7.4, 150mM NaCl, 0.02% sodium azide and 50% glycerol.
Storage	Store at +4°C short term. Store at -20°C long term. Avoid freeze / thaw cycle.

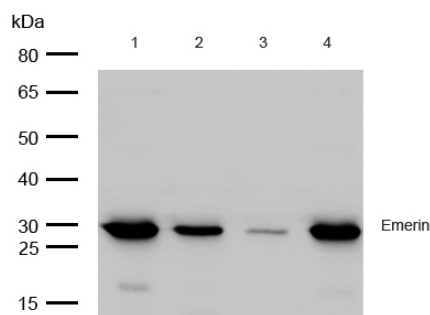
## Application Details

WB:1:500~1:2000

IHC:1:50~1:200

ICC/IF:1:50~1:200

## Images



All lanes: Emerin Rabbit mAb at 1/1k dilution

Lane 1 : Hela whole cell lysates Lane 2 : JK whole cell lysates  
Lane 3 : HepG2 whole cell lysates Lane 4 : MCF7 whole cell lysates

Lysates/proteins at 20 µg per lane.

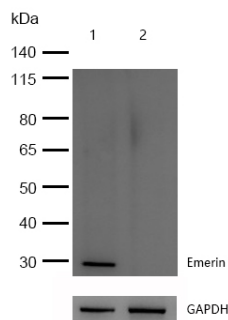
Secondary

All lanes : Goat Anti-Rabbit IgG H&amp;L (HRP) at 1/20000 dilution

Predicted band size: 29 kDa

Observed band size: 29 kDa

Exposure time:5 seconds

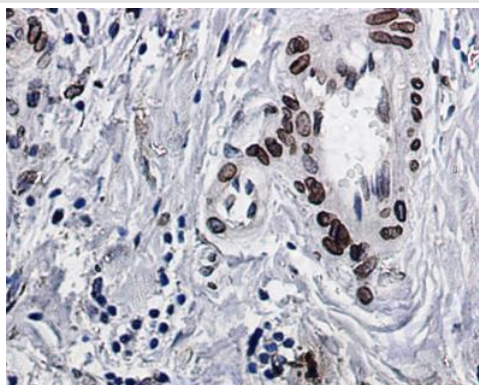


All lanes: Emerin Rabbit mAb at 1/1k dilution

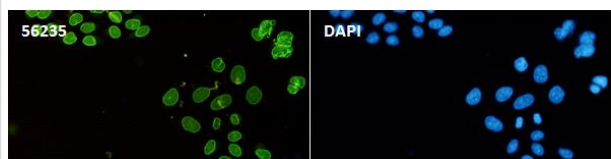
Lane 1 : Wild-type Hela cell lysate

Lane 2 : Emerin knockdown Hela cell lysate

Lysates/proteins at 20 µg per lane.



Formalin-fixed, paraffin-embedded human breast tissue stained for Emerin using 56235 at 1/100 dilution in immunohistochemical analysis.



Immunocytochemistry/ Immunofluorescence Emerin antibody (56235) ICC/IF staining of Emerin in Hela cells. Cells were fixed with 4% Paraformaldehyde permeabilized with 0.1% Triton X-100.

Samples were incubated with 56235 at a working dilution of 1/100. The secondary antibody was Alexa FluorB 488 goat anti rabbit, used at a dilution of 1/500.

Nuclei were counterstained with DAPI.

## Product Description

Emerin may regulate gene expression through binding to other transcriptional regulators. Emerin binds to  $\beta$ -catenin and inhibits its nuclear accumulation. Recent studies demonstrate that Emerin is required for HIV-1 infectivity.

Note: This product is for in vitro research use only and is not intended for use in humans or animals.