

xCT Rabbit mAb

Catalog No: #56243

Package Size: #56243-1 50ul #56243-2 100ul

Orders: order@signalwayantibody.comSupport: tech@signalwayantibody.com

Description

Product Name	xCT Rabbit mAb
Host Species	Recombinant Rabbit
Clonality	Monoclonal
Isotype	Rabbit IgG
Purification	Affinity-chromatography
Applications	WB, ICC/IF, IP
Species Reactivity	Human; Mouse; Rat
Specificity	xCT Antibody detects endogenous levels of total xCT
Immunogen Description	A synthesized peptide derived from human xCT
Conjugates	Unconjugated
Other Names	CCBR1; Cysteine/glutamate transporter; SLC7A11; solute carrier family 7; xCT;
Accession No.	Uniprot:Q9UPY5
Calculated MW	55kDa
Formulation	Rabbit IgG in phosphate buffered saline , pH 7.4, 150mM NaCl, 0.02% sodium azide and 50% glycerol.
Storage	Store at +4°C short term. Store at -20°C long term. Avoid freeze / thaw cycle.

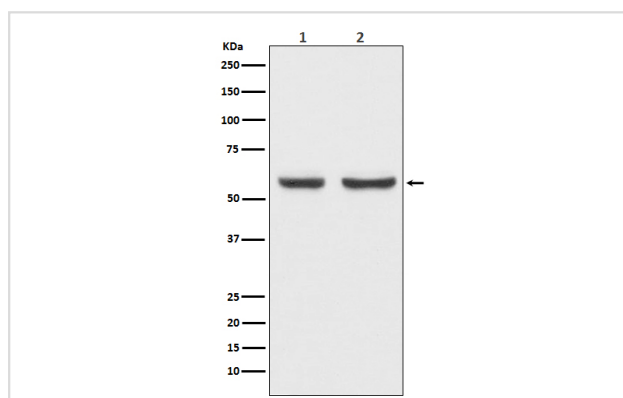
Application Details

WB 1:500~1:2000

ICC/IF 1:50~1:150

IP 1:50

Images



Western blot analysis of xCT expression in (1) HepG2 cell lysate; (2) Mouse brain lysate.

Product Description

Sodium-independent, high-affinity exchange of anionic amino acids with high specificity for anionic form of cystine and glutamate.

Note: This product is for in vitro research use only and is not intended for use in humans or animals.