

## UQCRC2 Rabbit mAb

Catalog No: #56271

Package Size: #56271-1 50ul #56271-2 100ul

Orders: [order@signalwayantibody.com](mailto:order@signalwayantibody.com)Support: [tech@signalwayantibody.com](mailto:tech@signalwayantibody.com)

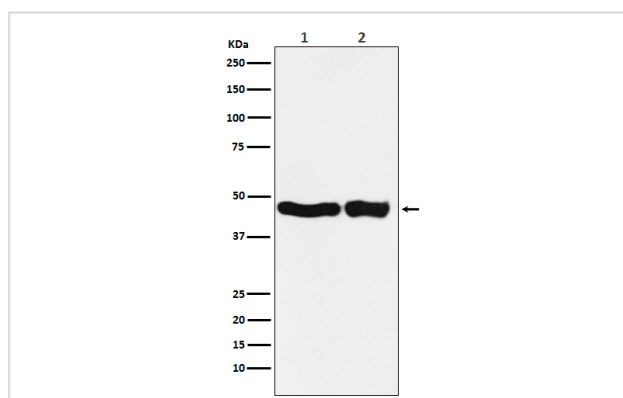
## Description

Product Name	UQCRC2 Rabbit mAb
Host Species	Recombinant Rabbit
Clonality	Monoclonal
Isotype	Rabbit IgG
Purification	Affinity-chromatography
Applications	WB IHC ICC/IF IP FC
Species Reactivity	Human;Mouse;Rat
Specificity	UQCRC2 Antibody detects endogenous levels of total UQCRC2
Immunogen Description	A synthesized peptide derived from human UQCRC2
Conjugates	Unconjugated
Other Names	Core protein II; QCR2; mitochondrial; Ubiquinol cytochrome c reductase core protein II; UQCR2; Uqcr2;
Accession No.	Uniprot:P22695
Calculated MW	48kDa
Formulation	Rabbit IgG in phosphate buffered saline , pH 7.4, 150mM NaCl, 0.02% sodium azide and 50% glycerol.
Storage	Store at +4°C short term. Store at -20°C long term. Avoid freeze / thaw cycle.

## Application Details

WB:1:500~1:2000IHC:1:50~1:200ICC/IF:1:50~1:200IP:1:50FC:1:50

## Images



Western blot analysis of UQCRC2 expression in (1) HEK293 cell lysate; (2) Mouse kidney lysate.

## Product Description

This is a component of the ubiquinol-cytochrome c reductase complex (complex III or cytochrome b-c1 complex), which is part of the mitochondrial respiratory chain. The core protein 2 is required for the assembly of the complex.

---

Note: This product is for in vitro research use only and is not intended for use in humans or animals.