

CD166 Rabbit mAb

Catalog No: #56295



Package Size: #56295-1 50ul #56295-2 100ul

Orders: order@signalwayantibody.comSupport: tech@signalwayantibody.com

Description

Product Name	CD166 Rabbit mAb
Host Species	Recombinant Rabbit
Clonality	Monoclonal
Isotype	Rabbit IgG
Purification	Affinity-chromatography
Applications	WB IHC ICC/IF IP FC
Species Reactivity	Human;Mouse;Rat
Specificity	CD166 Antibody detects endogenous levels of total CD166
Immunogen Description	A synthesized peptide derived from human CD166
Conjugates	Unconjugated
Other Names	ALCAM; CD166; MEMD;
Accession No.	Uniprot:Q13740
Calculated MW	65kDa
SDS-PAGE MW	100kDa
Formulation	Rabbit IgG in phosphate buffered saline , pH 7.4, 150mM NaCl, 0.02% sodium azide and 50% glycerol.
Storage	Store at +4°C short term. Store at -20°C long term. Avoid freeze / thaw cycle.

Application Details

WB:1:1000~1:5000

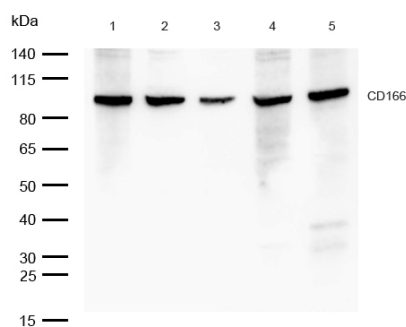
IHC:1:50~1:200

ICC/IF:1:50~1:200

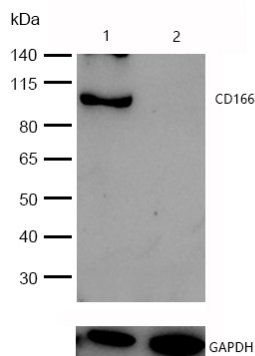
IP:1:40

FC:1:60

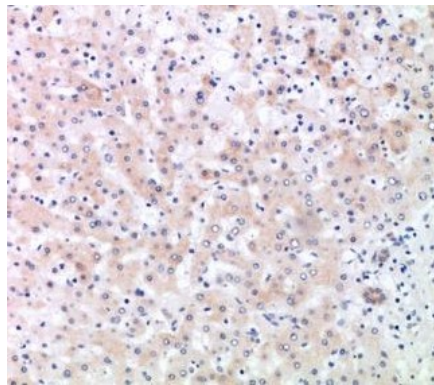
Images



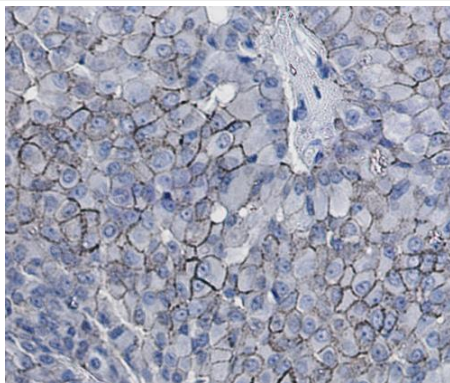
All lanes: CD166 Rabbit mAb at 1/1k dilution
 Lane 1 : MCF7 whole cell lysates
 Lane 2 : HepG2 whole cell lysates
 Lane 3 : Mouse brain lysates
 Lane 4 : Mouse lung lysates
 Lane 5 : Rat brain lysates
 Lysates/proteins at 20 µg per lane.
 Secondary All lanes : Goat Anti-Rabbit IgG H&L (HRP) at 1/20000 dilution
 Predicted band size: 65 kDa
 Observed band size: 100 kDa
 Exposure time: 4 seconds



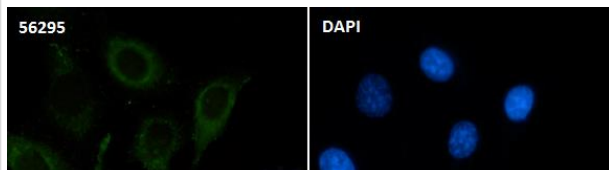
All lanes :CD166 Rabbit mAb at 1/1k dilution
Lane 1 : Wild-type A549 cell lysate
Lane 2 :CD166 knockdown A549 cell lysate
Lysates/proteins at 20 µg per lane.



Formalin-fixed, paraffin-embedded human liver tissue stained for CD166 using 48272 at 1/100 dilution in immunohistochemical analysis.



Formalin-fixed, paraffin-embedded human breast cancer tissue stained for CD166 using 48272 at 1/100 dilution in immunohistochemical analysis.



Immunocytochemistry/ Immunofluorescence CD166 antibody (48272) ICC/IF staining of CD166 in SKOV-3 cells. Cells were fixed with 4% Paraformaldehyde permeabilized with 0.1% Triton X-100.

Samples were incubated with 48272 at a working dilution of 1/100. The secondary antibody was Alexa FluorB 488 goat anti rabbit, used at a dilution of 1/500.

Nuclei were counterstained with DAPI.

Product Description

Cell adhesion molecule that binds to CD6. Involved in neurite extension by neurons via heterophilic and homophilic interactions. May play a role in the binding of T- and B-cells to activated leukocytes, as well as in interactions between cells of the nervous system.

Note: This product is for in vitro research use only and is not intended for use in humans or animals.