

ABHD5 Rabbit mAb

Catalog No: #56401

Package Size: #56401-1 50ul #56401-2 100ul

Orders: order@signalwayantibody.comSupport: tech@signalwayantibody.com

Description

Product Name	ABHD5 Rabbit mAb
Host Species	Recombinant Rabbit
Clonality	Monoclonal
Isotype	Rabbit IgG
Purification	Affinity-chromatography
Applications	WB IHC
Species Reactivity	Human
Specificity	ABHD5 Antibody detects endogenous levels of total ABHD5
Immunogen Description	A synthesized peptide derived from human ABHD5
Conjugates	Unconjugated
Other Names	ABHD5; Abhydrolase domain containing 5; CDS; CGI58; IECN2; NCIE2;
Accession No.	Uniprot:Q8WTS1
Calculated MW	39kDa
SDS-PAGE MW	45kDa
Formulation	Rabbit IgG in phosphate buffered saline , pH 7.4, 150mM NaCl, 0.02% sodium azide and 50% glycerol.
Storage	Store at +4°C short term. Store at -20°C long term. Avoid freeze / thaw cycle.

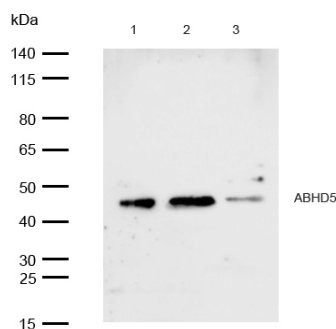
Application Details

WB:1:500~1:2000

IHC:1:100~1:500

FC:1:100

Images



All lanes: ABHD5 Rabbit mAb at 1/1k dilution

Lane 1 : Hela whole cell lysates Lane 2 : HepG2 whole cell lysates Lane 3 : MCF7 whole cell lysates

Lysates/proteins at 20 µg per lane.

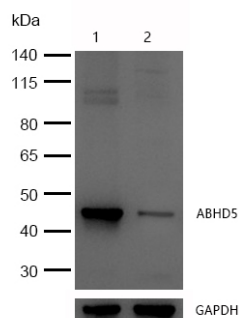
Secondary

All lanes : Goat Anti-Rabbit IgG H&L (HRP) at 1/20000 dilution

Predicted band size: 39 kDa

Observed band size: 45 kDa

Exposure time: 3 seconds

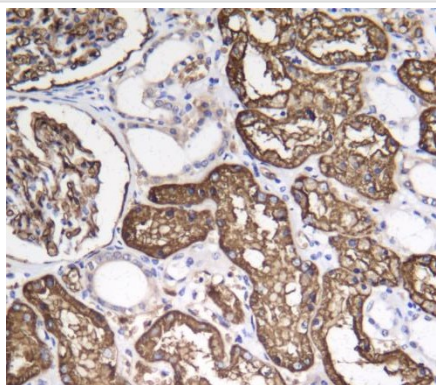


All lanes: ABHD5 Rabbit mAb at 1/1k dilution

Lane 1 : Wild-type HeLa cell lysate

Lane 2 : ABHD5 knockdown HeLa cell lysate

Lysates/proteins at 20 µg per lane.



Formalin-fixed, paraffin-embedded human kidney tissue stained for ABHD5 using 56401 at 1/100 dilution in immunohistochemical analysis.

Product Description

Lysophosphatidic acid acyltransferase which functions in phosphatidic acid biosynthesis. May regulate the cellular storage of triacylglycerol through activation of the phospholipase PNPLA2. Involved in keratinocyte differentiation.

Note: This product is for in vitro research use only and is not intended for use in humans or animals.