

Aminopeptidase A / CD249 Rabbit mAb

Catalog No: #56486



Package Size: #56486-1 50ul #56486-2 100ul

Orders: order@signalwayantibody.com

Support: tech@signalwayantibody.com

Description

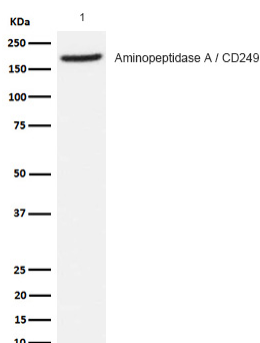
Product Name	Aminopeptidase A / CD249 Rabbit mAb
Host Species	Recombinant Rabbit
Clonality	Monoclonal
Isotype	Rabbit IgG
Purification	Affinity-chromatography
Applications	WB IHC
Species Reactivity	Human
Specificity	Aminopeptidase A / CD249 Antibody detects endogenous levels of total Aminopeptidase A / CD249
Immunogen Description	A synthesized peptide derived from human Aminopeptidase A / CD249
Conjugates	Unconjugated
Other Names	Aminopeptidase A; APA; bp1; CD249; EAP; Enpep; Gp160; Ly51;
Accession No.	Uniprot:Q07075
Calculated MW	109kDa
SDS-PAGE MW	160kDa
Formulation	Rabbit IgG in phosphate buffered saline , pH 7.4, 150mM NaCl, 0.02% sodium azide and 50% glycerol.
Storage	Store at +4°C short term. Store at -20°C long term. Avoid freeze / thaw cycle.

Application Details

WB:1:1000~1:5000

IHC:1:50~1:200

Images



All lanes: Aminopeptidase A / CD249 Rabbit mAb at 1/1k dilution

Lane 1 : Human fetal lung lysate

Lysates/proteins at 20 µg per lane.

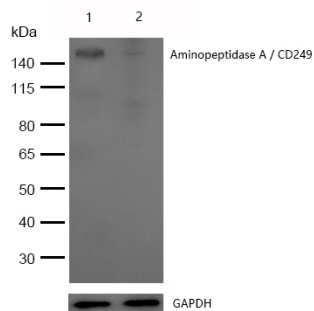
Secondary

All lanes : Goat Anti-Rabbit IgG H&L (HRP) at 1/20000 dilution

Predicted band size: 109 kDa

Observed band size: 160 kDa

Exposure time: 4 seconds

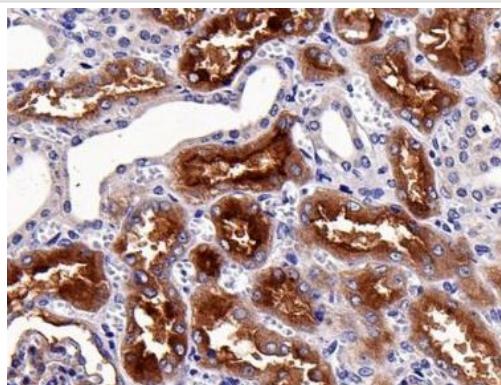


All lanes: Aminopeptidase A / CD249 Rabbit mAb at 1/1k dilution

Lane 1 : Wild-type HeLa cell lysate

Lane 2 : Aminopeptidase A / CD249 knockdown HeLa cell lysate

Lysates/proteins at 20 µg per lane.



Formalin-fixed, paraffin-embedded human kidney tissue stained for Aminopeptidase A / CD249 using 56486 at 1/100 dilution in immunohistochemical analysis.

Product Description

Appears to have a role in the catabolic pathway of the renin-angiotensin system. Probably plays a role in regulating growth and differentiation of early B-lineage cells.

Note: This product is for in vitro research use only and is not intended for use in humans or animals.