

## GDF3 Rabbit mAb

Catalog No: #56498

Package Size: #56498-1 50ul #56498-2 100ul

Orders: [order@signalwayantibody.com](mailto:order@signalwayantibody.com)Support: [tech@signalwayantibody.com](mailto:tech@signalwayantibody.com)

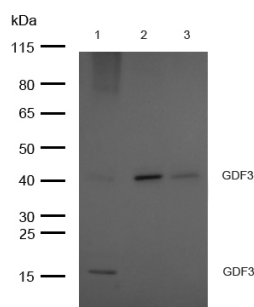
## Description

Product Name	GDF3 Rabbit mAb
Host Species	Recombinant Rabbit
Clonality	Monoclonal
Isotype	Rabbit IgG
Purification	Affinity-chromatography
Applications	WB
Species Reactivity	Human;Mouse;Rat
Specificity	GDF3 Antibody detects endogenous levels of total GDF3
Immunogen Description	A synthesized peptide derived from human GDF3
Conjugates	Unconjugated
Other Names	ecat9; GDF3; KFS3; MCOP7; Vgr2;
Accession No.	Uniprot:Q9NR23
Calculated MW	16kDa
SDS-PAGE MW	16,41kDa
Formulation	Rabbit IgG in phosphate buffered saline , pH 7.4, 150mM NaCl, 0.02% sodium azide and 50% glycerol.
Storage	Store at +4°C short term. Store at -20°C long term. Avoid freeze / thaw cycle.

## Application Details

WB:1:500~1:2000

## Images



All lanes: GDF3 Rabbit mAb at 1/1k dilution

Lane 1 : THP-1 whole cell lysates Lane 2 : Mouse kidney lysates Lane 3 : Rat kidney lysates

Lysates/proteins at 20 µg per lane.

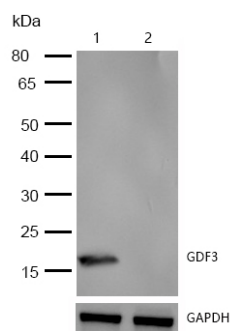
Secondary

All lanes : Goat Anti-Rabbit IgG H&amp;L (HRP) at 1/20000 dilution

Predicted band size: 16 kDa

Observed band size: 16,41 kDa

Exposure time: 9 seconds



All lanes:GDF3 Rabbit mAb at 1/1k dilution

Lane 1 : Wild-type HeLa cell lysate

Lane 2 : GDF3 knockdown HeLa cell lysate

Lysates/proteins at 20 µg per lane.

## Product Description

Growth factor involved in early embryonic development and adipose-tissue homeostasis. During embryogenesis controls formation of anterior visceral endoderm and mesoderm and the establishment of anterior-posterior identity through a receptor complex comprising the receptor ACVR1B and the coreceptor TDGF1/Cripto (By similarity).

Note: This product is for in vitro research use only and is not intended for use in humans or animals.