

## Calpain small subunit 1 Rabbit mAb

Catalog No: #56533

Package Size: #56533-1 50ul #56533-2 100ul

Orders: [order@signalwayantibody.com](mailto:order@signalwayantibody.com)Support: [tech@signalwayantibody.com](mailto:tech@signalwayantibody.com)

## Description

Product Name	Calpain small subunit 1 Rabbit mAb
Host Species	Recombinant Rabbit
Clonality	Monoclonal
Isotype	Rabbit IgG
Purification	Affinity-chromatography
Applications	WB IHC ICC/IF
Species Reactivity	Human;Mouse;Rat
Specificity	Calpain small subunit 1 Antibody detects endogenous levels of total Calpain small subunit 1
Immunogen Description	A synthesized peptide derived from human Calpain small subunit 1
Conjugates	Unconjugated
Other Names	Calpain4; CalpainS1; CANP; CANPS; CAPN4; CAPNS; Capns1; CDPS; CSS1;
Accession No.	Uniprot:P04632
Calculated MW	28kDa
SDS-PAGE MW	28kDa
Formulation	Rabbit IgG in phosphate buffered saline , pH 7.4, 150mM NaCl, 0.02% sodium azide and 50% glycerol.
Storage	Store at +4°C short term. Store at -20°C long term. Avoid freeze / thaw cycle.

## Application Details

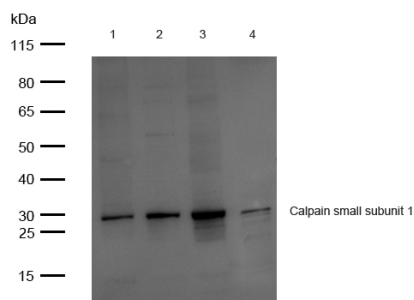
WB:1:500~1:2000

IHC:1:50~1:200

ICC/IF:1:50~1:200

FC:1:50

## Images



All lanes: Calpain small subunit 1 Rabbit mAb at 1/1k dilution

Lane 1 : 293T whole cell lysates Lane 2 : THP-1 whole cell lysates Lane 3 : Rat lung lysates Lane 4 : Mouse lung lysates

Lysates/proteins at 20 µg per lane.

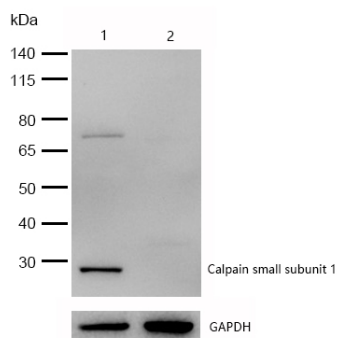
Secondary

All lanes : Goat Anti-Rabbit IgG H&amp;L (HRP) at 1/20000 dilution

Predicted band size: 28 kDa

Observed band size: 28 kDa

Exposure time: 7 seconds

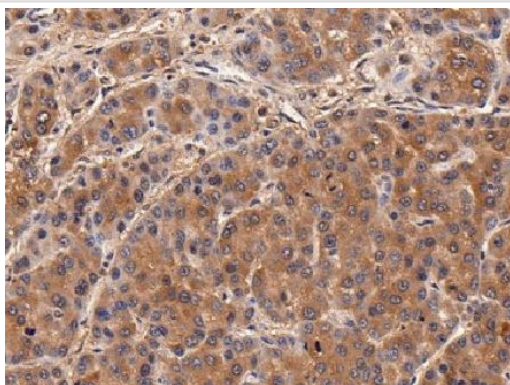


All lanes: Calpain small subunit 1 Rabbit mAb at 1/1k dilution

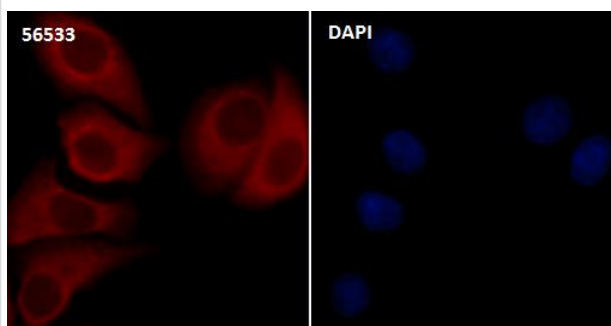
Lane 1 : Wild-type HeLa cell lysate

Lane 2 : Calpain small subunit 1 knockdown HeLa cell lysate

Lysates/proteins at 20 µg per lane.



Formalin-fixed, paraffin-embedded human liver cancer tissue stained for Calpain small subunit 1 using 56533 at 1/100 dilution in immunohistochemical analysis.



Immunocytochemistry/ Immunofluorescence Calpain small subunit 1 antibody (56533) ICC/IF staining of Calpain small subunit 1 in HeLa cells. Cells were fixed with 4% Paraformaldehyde permeabilized with 0.1% Triton X-100.

Samples were incubated with 56533 at a working dilution of 1/100. The secondary antibody was Alexa FluorB 647 goat anti rabbit, used at a dilution of 1/500.

Nuclei were counterstained with DAPI.

## Product Description

Regulatory subunit of the calcium-regulated non-lysosomal thiol-protease which catalyzes limited proteolysis of substrates involved in cytoskeletal remodeling and signal transduction.

Note: This product is for in vitro research use only and is not intended for use in humans or animals.