

## BCL2L12 Rabbit mAb

Catalog No: #56580



Package Size: #56580-1 50ul #56580-2 100ul

Orders: order@signalwayantibody.com

Support: tech@signalwayantibody.com

## Description

Product Name	BCL2L12 Rabbit mAb
Host Species	Recombinant Rabbit
Clonality	Monoclonal
Isotype	Rabbit IgG
Purification	Affinity-chromatography
Applications	WB IHC ICC/IF
Species Reactivity	Human
Specificity	BCL2L12 Antibody detects endogenous levels of total BCL2L12
Immunogen Description	A synthesized peptide derived from human BCL2L12
Conjugates	Unconjugated
Other Names	BCL2 like 12; BCL2L12; BPR;
Accession No.	Uniprot:Q9HB09
Calculated MW	37kDa
SDS-PAGE MW	32kDa
Formulation	Rabbit IgG in phosphate buffered saline , pH 7.4, 150mM NaCl, 0.02% sodium azide and 50% glycerol.
Storage	Store at +4°C short term. Store at -20°C long term. Avoid freeze / thaw cycle.

## Application Details

WB:1:500~1:2000

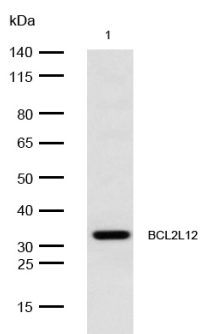
IHC:1:50~1:200

ICC/IF:1:50~1:200

IP:1:50

FC:1:50

## Images



All lanes: BCL2L12 Rabbit mAb at 1/1k dilution

Lane 1 : MCF7 whole cell lysates  
 Lysates/proteins at 20 µg per lane.

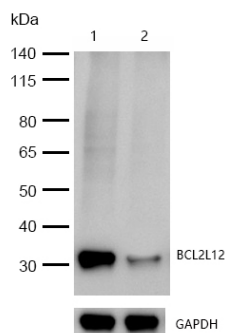
Secondary

All lanes : Goat Anti-Rabbit IgG H&amp;L (HRP) at 1/20000 dilution

Predicted band size: 37 kDa

Observed band size: 32 kDa

Exposure time: 8 seconds

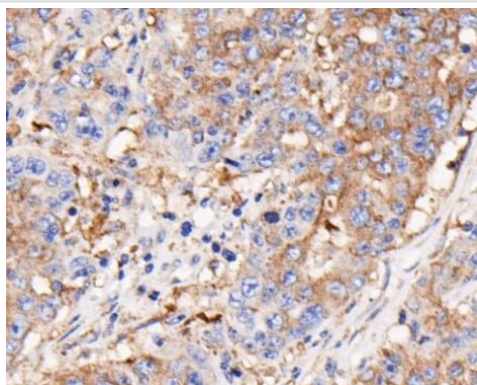


All lanes: BCL2L12 Rabbit mAb at 1/1k dilution

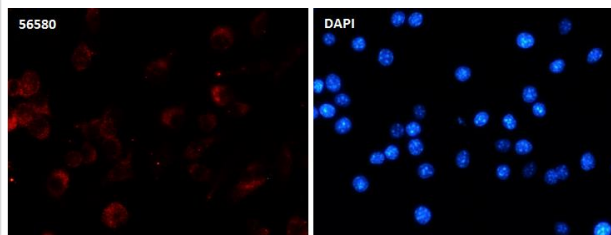
Lane 1 : Wild-type HeLa cell lysate

Lane 2 : BCL2L12 knockdown HeLa cell lysate

Lysates/proteins at 20 µg per lane.



Formalin-fixed, paraffin-embedded human gastric carcinoma tissue stained for BCL2L12 using 56580 at 1/100 dilution in immunohistochemical analysis.



Immunocytochemistry/ Immunofluorescence BCL2L12 antibody (56580) ICC/IF staining of BCL2L12 in A431 cells. Cells were fixed with 4% Paraformaldehyde permeabilized with 0.1% Triton X-100.

Samples were incubated with 56580 at a working dilution of 1/100. The secondary antibody was Alexa FluorB 647 goat anti rabbit, used at a dilution of 1/500.

Nuclei were counterstained with DAPI.

## Product Description

Belongs to the Bcl-2 family.

Note: This product is for in vitro research use only and is not intended for use in humans or animals.