

PHAPI2 / APRIL Rabbit mAb

Catalog No: #56610

Package Size: #56610-1 50ul #56610-2 100ul

Orders: order@signalwayantibody.comSupport: tech@signalwayantibody.com

Description

Product Name	PHAPI2 / APRIL Rabbit mAb
Host Species	Recombinant Rabbit
Clonality	Monoclonal
Isotype	Rabbit IgG
Purification	Affinity-chromatography
Applications	WB IHC ICC/IF
Species Reactivity	Human;Mouse;Rat
Specificity	PHAPI2 / APRIL Antibody detects endogenous levels of total PHAPI2 / APRIL
Immunogen Description	A synthesized peptide derived from human PHAPI2 / APRIL
Conjugates	Unconjugated
Other Names	ANP32B; PAL31; PHAPI2; PHAPI2a; Ssp29;
Accession No.	Uniprot:Q92688
Calculated MW	29kDa
SDS-PAGE MW	29kDa
Formulation	Rabbit IgG in phosphate buffered saline , pH 7.4, 150mM NaCl, 0.02% sodium azide and 50% glycerol.
Storage	Store at +4°C short term. Store at -20°C long term. Avoid freeze / thaw cycle.

Application Details

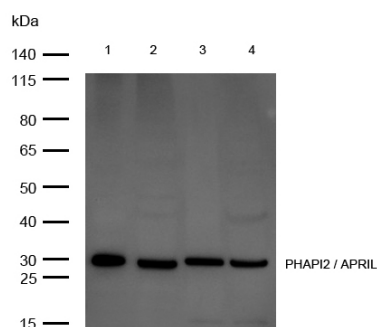
WB:1:500~1:1000

IHC:1:50~1:200

ICC/IF:1:50~1:200

FC:1:100

Images



All lanes: PHAPI2 / APRIL Rabbit mAb at 1/1k dilution

Lane 1 : MCF7 whole cell lysates Lane 2 : JK whole cell lysates Lane 3 : RAW264.7 whole cell lysates Lane 4 : Mouse lung lysates

Lysates/proteins at 20 µg per lane.

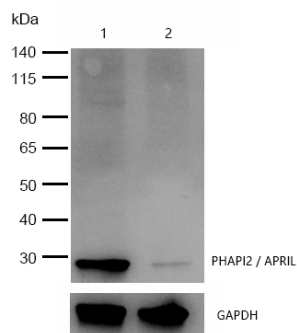
Secondary

All lanes : Goat Anti-Rabbit IgG H&L (HRP) at 1/20000 dilution

Predicted band size: 29 kDa

Observed band size: 29 kDa

Exposure time: 5 seconds

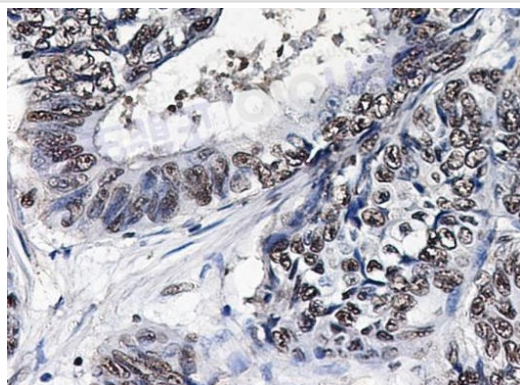


All lanes: PHAPI2 / APRIL Rabbit mAb at 1/1k dilution

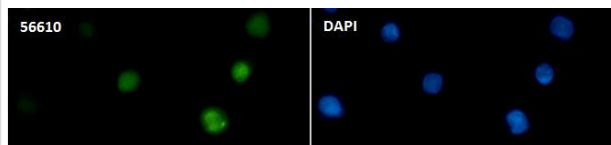
Lane 1 : Wild-type Hela cell lysate

Lane 2 : PHAPI2 / APRIL knockdown Hela cell lysate

Lysates/proteins at 20 µg per lane.



Formalin-fixed, paraffin-embedded human colon cancer tissue stained for PHAPI2 / APRIL using 56610 at 1/100 dilution in immunohistochemical analysis.



Immunocytochemistry/ Immunofluorescence PHAPI2 / APRIL antibody (56610) ICC/IF staining of PHAPI2 / APRIL in K562 cells. Cells were fixed with 4% Paraformaldehyde permeabilized with 0.1% Triton X-100.

Samples were incubated with 56610 at a working dilution of 1/100. The secondary antibody was Alexa FluorB 488 goat anti rabbit, used at a dilution of 1/500.

Nuclei were counterstained with DAPI.

Product Description

Multifunctional protein working as a cell cycle progression factor as well as a cell survival factor. Required for the progression from the G1 to the S phase.

Note: This product is for in vitro research use only and is not intended for use in humans or animals.