

CDKN2C Rabbit mAb

Catalog No: #56630

Package Size: #56630-1 50ul #56630-2 100ul

Orders: order@signalwayantibody.comSupport: tech@signalwayantibody.com

Description

Product Name	CDKN2C Rabbit mAb
Host Species	Recombinant Rabbit
Clonality	Monoclonal
Isotype	Rabbit IgG
Purification	Affinity-chromatography
Applications	WB IHC ICC/IF
Species Reactivity	Human;Mouse;Rat
Specificity	CDKN2C Antibody detects endogenous levels of total CDKN2C
Immunogen Description	A synthesized peptide derived from human CDKN2C
Conjugates	Unconjugated
Other Names	Cdkn2c; CDKN6; INK4C; p18; p18 inhibits CDK4; p18 INK4c; p18 INK6; p18-INK4c; p18-INK6;
Accession No.	Uniprot:P42773
Calculated MW	18kDa
SDS-PAGE MW	16kDa
Formulation	Rabbit IgG in phosphate buffered saline , pH 7.4, 150mM NaCl, 0.02% sodium azide and 50% glycerol.
Storage	Store at +4°C short term. Store at -20°C long term. Avoid freeze / thaw cycle.

Application Details

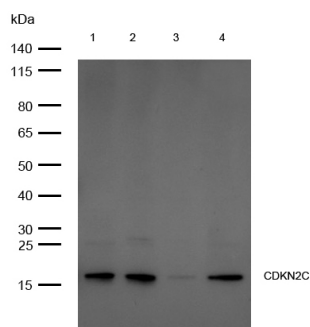
WB:1:500~1:2000

IHC:1:50~1:200

ICC/IF:1:50~1:200

IP:1:40

Images



All lanes: CDKN2C Rabbit mAb at 1/1k dilution

Lane 1 : MCF7 whole cell lysates Lane 2 : SH-SY5Y whole cell lysates Lane 3 : Mouse bone lysates Lane 4 : Rat bone lysates

Lysates/proteins at 20 µg per lane.

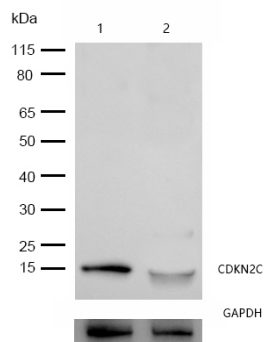
Secondary

All lanes : Goat Anti-Rabbit IgG H&L (HRP) at 1/20000 dilution

Predicted band size: 18 kDa

Observed band size: 16 kDa

Exposure time: 8 seconds

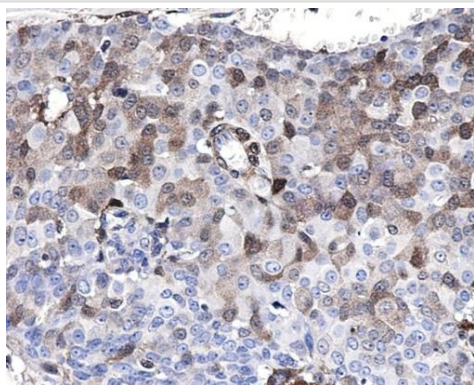


All lanes: CDKN2C Rabbit mAb at 1/1k dilution

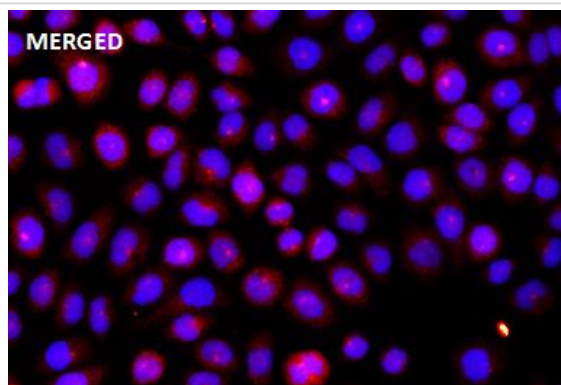
Lane 1 : Wild-type HeLa cell lysate

Lane 2 : CDKN2C knockdown HeLa cell lysate

Lysates/proteins at 20 µg per lane.



Formalin-fixed, paraffin-embedded human breast cancer tissue stained for CDKN2C using 56630 at 1/100 dilution in immunohistochemical analysis.



Immunocytochemistry/ Immunofluorescence CDKN2C antibody (56630) ICC/IF staining of CDKN2C in HeLa cells. Cells were fixed with 4% Paraformaldehyde permeabilized with 0.1% Triton X-100.

Samples were incubated with 56630 at a working dilution of 1/100. The secondary antibody was Alexa FluorB 647 goat anti rabbit, used at a dilution of 1/500.

Nuclei were counterstained with DAPI.

Product Description

Interacts strongly with CDK6, weakly with CDK4. Inhibits cell growth and proliferation with a correlated dependence on endogenous retinoblastoma protein RB.

Note: This product is for in vitro research use only and is not intended for use in humans or animals.