

DLAT Rabbit mAb

Catalog No: #56637

Package Size: #56637-1 50ul #56637-2 100ul

Orders: order@signalwayantibody.comSupport: tech@signalwayantibody.com

Description

Product Name	DLAT Rabbit mAb
Host Species	Recombinant Rabbit
Clonality	Monoclonal
Isotype	Rabbit IgG
Purification	Affinity-chromatography
Applications	WB ICC/IF
Species Reactivity	Human;Mouse;Rat
Specificity	DLAT Antibody detects endogenous levels of total DLAT
Immunogen Description	A synthesized peptide derived from human DLAT
Conjugates	Unconjugated
Other Names	DLAT; DLTA; E2; PBC; PDCE2;
Accession No.	Uniprot:P10515
Calculated MW	69kDa
SDS-PAGE MW	69kDa
Formulation	Rabbit IgG in phosphate buffered saline , pH 7.4, 150mM NaCl, 0.02% sodium azide and 50% glycerol.
Storage	Store at +4°C short term. Store at -20°C long term. Avoid freeze / thaw cycle.

Application Details

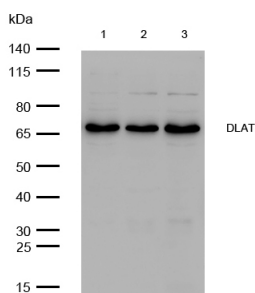
WB:1:500~1:2000

ICC/IF:1:50~1:200

IP:1:50

FC:1:50

Images



All lanes: DLAT Rabbit mAb at 1/1k dilution

Lane 1 : JK whole cell lysates Lane 2 : HepG2 whole cell lysates Lane 3 : MCF7 whole cell lysates
Lysates/proteins at 20 µg per lane.

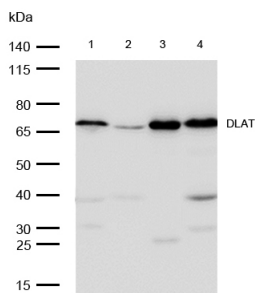
Secondary

All lanes : Goat Anti-Rabbit IgG H&L (HRP) at 1/20000 dilution

Predicted band size: 69 kDa

Observed band size: 69 kDa

Exposure time: 3 seconds



All lanes: DLAT Rabbit mAb at 1/1k dilution

Lane 1 : Mouse brain lysates Lane 2 : Mouse skin lysates

Lane 3 : Rat heart lysates Lane 4 : Rat liver lysates

Lysates/proteins at 20 µg per lane.

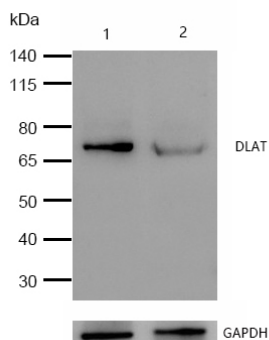
Secondary

All lanes : Goat Anti-Rabbit IgG H&L (HRP) at 1/20000 dilution

Predicted band size: 69 kDa

Observed band size: 69 kDa

Exposure time: 6 seconds

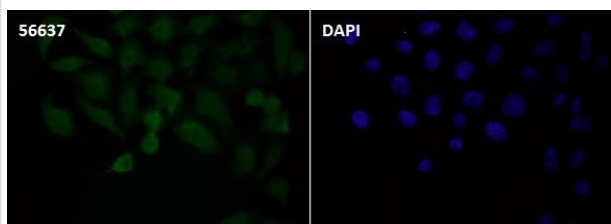


All lanes :DLAT Rabbit mAb at 1/1k dilution

Lane 1 : Wild-type HAP1 cell lysate

Lane 2 : DLAT knockdown HAP1 cell lysate

Lysates/proteins at 20 µg per lane.



Immunocytochemistry/ Immunofluorescence DLAT antibody (56637)

ICC/IF staining of DLAT in Hela cells. Cells were fixed with 4% Paraformaldehyde permeabilized with 0.1% Triton X-100.

Samples were incubated with 56637 at a working dilution of 1/100. The secondary antibody was Alexa FluorB 488 goat anti rabbit, used at a dilution of 1/500.

Nuclei were counterstained with DAPI.

Product Description

The pyruvate dehydrogenase complex catalyzes the overall conversion of pyruvate to acetyl-CoA and CO₂. It contains multiple copies of three enzymatic components: pyruvate dehydrogenase (E1), dihydrolipoamide acetyltransferase (E2) and lipoamide dehydrogenase (E3).

Note: This product is for in vitro research use only and is not intended for use in humans or animals.