

Galactosidase alpha Rabbit mAb

Catalog No: #56651

Package Size: #56651-1 50ul #56651-2 100ul

Orders: order@signalwayantibody.comSupport: tech@signalwayantibody.com

Description

Product Name	Galactosidase alpha Rabbit mAb
Host Species	Recombinant Rabbit
Clonality	Monoclonal
Isotype	Rabbit IgG
Purification	Affinity-chromatography
Applications	WB IHC ICC/IF
Species Reactivity	Human
Specificity	Galactosidase alpha Antibody detects endogenous levels of total Galactosidase alpha
Immunogen Description	A synthesized peptide derived from human Galactosidase alpha
Conjugates	Unconjugated
Other Names	Alpha gal A; GALA; Galactosidase, alpha; GLA; Melibiase;
Accession No.	Uniprot:P06280
Calculated MW	49kDa
SDS-PAGE MW	49kDa
Formulation	Rabbit IgG in phosphate buffered saline , pH 7.4, 150mM NaCl, 0.02% sodium azide and 50% glycerol.
Storage	Store at +4°C short term. Store at -20°C long term. Avoid freeze / thaw cycle.

Application Details

WB:1:500~1:2000

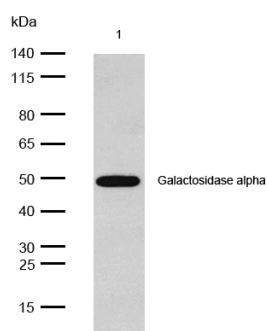
IHC:1:50~1:200

ICC/IF:1:50~1:200

IP:1:50

FC:1:80

Images



All lanes: Galactosidase alpha Rabbit mAb at 1/1k dilution

Lane 1 : MCF7 whole cell lysates
Lysates/proteins at 20 µg per lane.

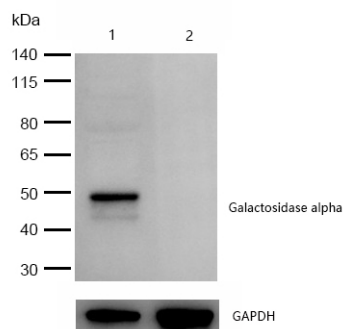
Secondary

All lanes : Goat Anti-Rabbit IgG H&L (HRP) at 1/20000 dilution

Predicted band size: 49 kDa

Observed band size: 49 kDa

Exposure time: 5 seconds

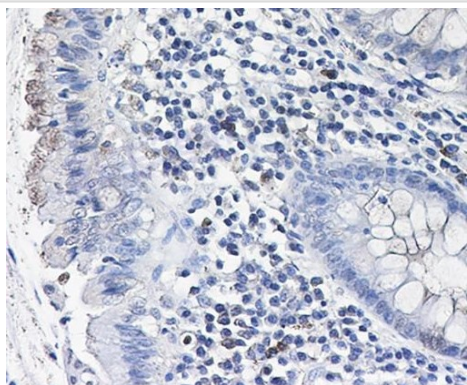


All lanes:Galactosidase alpha Rabbit mAb at 1/1k dilution

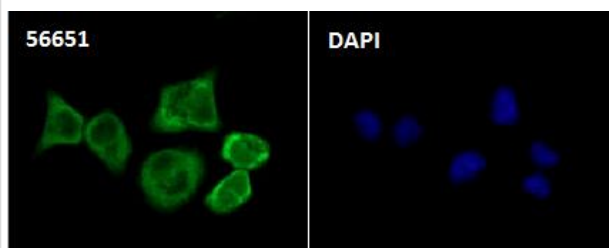
Lane 1 : Wild-type HeLa cell lysate

Lane 2 : Galactosidase alpha knockdown HeLa cell lysate

Lysates/proteins at 20 µg per lane.



Formalin-fixed, paraffin-embedded human colon cancer tissue stained for Galactosidase alpha using 56651 at 1/100 dilution in immunohistochemical analysis.



Immunocytochemistry/ Immunofluorescence Galactosidase alpha antibody (56651) ICC/IF staining of Galactosidase alpha in HeLa cells. Cells were fixed with 4% Paraformaldehyde permeabilized with 0.1% Triton X-100.

Samples were incubated with 56651 at a working dilution of 1/100. The secondary antibody was Alexa FluorB 488 goat anti rabbit, used at a dilution of 1/500.

Nuclei were counterstained with DAPI.

Product Description

Defects in GLA are the cause of Fabry disease (FD) [MIM:301500]. FD is a rare X-linked sphingolipidosis disease where glycolipid accumulates in many tissues. The disease consists of an inborn error of glycosphingolipid catabolism.

Note: This product is for in vitro research use only and is not intended for use in humans or animals.