

BCAR1 Rabbit mAb

Catalog No: #56670



Package Size: #56670-1 50ul #56670-2 100ul

Orders: order@signalwayantibody.comSupport: tech@signalwayantibody.com

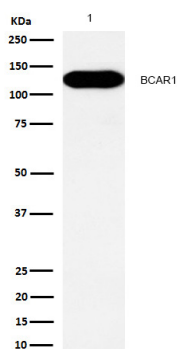
Description

Product Name	BCAR1 Rabbit mAb
Host Species	Recombinant Rabbit
Clonality	Monoclonal
Isotype	Rabbit IgG
Purification	Affinity-chromatography
Applications	WB
Species Reactivity	Human;Mouse;Rat
Specificity	BCAR1 Antibody detects endogenous levels of total BCAR1
Immunogen Description	A synthesized peptide derived from human BCAR1
Conjugates	Unconjugated
Other Names	BCAR 1; CAS; CAS1; Cass1; CRKAS; p130cas;
Accession No.	Uniprot:P56945
Calculated MW	93kDa
SDS-PAGE MW	130kDa
Formulation	Rabbit IgG in phosphate buffered saline , pH 7.4, 150mM NaCl, 0.02% sodium azide and 50% glycerol.
Storage	Store at +4°C short term. Store at -20°C long term. Avoid freeze / thaw cycle.

Application Details

WB:1:500~1:2000

Images



All lanes: BCAR1 Rabbit mAb at 1/1k dilution

Lane 1 : A431 whole cell lysates
Lysates/proteins at 20 µg per lane.

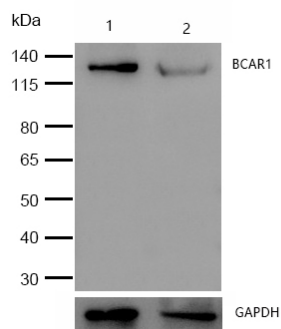
Secondary

All lanes : Goat Anti-Rabbit IgG H&L (HRP) at 1/20000 dilution

Predicted band size: 93 kDa

Observed band size: 130 kDa

Exposure time: 7 seconds



All lanes :BCAR1 Rabbit mAb at 1/1k dilution

Lane 1 : Wild-type HAP1 cell lysate

Lane 2 : BCAR1 knockdown HAP1 cell lysate

Lysates/proteins at 20 μ g per lane.

Product Description

Docking protein which plays a central coordinating role for tyrosine kinase-based signaling related to cell adhesion. Implicated in induction of cell migration. Overexpression confers antiestrogen resistance on breast cancer cells.

Note: This product is for in vitro research use only and is not intended for use in humans or animals.