

Calmegin Rabbit mAb

Catalog No: #56682



Package Size: #56682-1 50ul #56682-2 100ul

Orders: order@signalwayantibody.comSupport: tech@signalwayantibody.com

Description

Product Name	Calmegin Rabbit mAb
Host Species	Recombinant Rabbit
Clonality	Monoclonal
Isotype	Rabbit IgG
Purification	Affinity-chromatography
Applications	WB IHC ICC/IF
Species Reactivity	Human;Mouse;Rat
Specificity	Calmegin Antibody detects endogenous levels of total Calmegin
Immunogen Description	A synthesized peptide derived from human Calmegin
Conjugates	Unconjugated
Other Names	CLGN; MEG 1 antigen; Calnexin-T; Calmegin precursor; Calmegin;
Accession No.	Uniprot:O14967
Calculated MW	70kDa
SDS-PAGE MW	100kDa
Formulation	Rabbit IgG in phosphate buffered saline , pH 7.4, 150mM NaCl, 0.02% sodium azide and 50% glycerol.
Storage	Store at +4°C short term. Store at -20°C long term. Avoid freeze / thaw cycle.

Application Details

WB:

1:5000~1:10000

IHC:

1:50~1:200

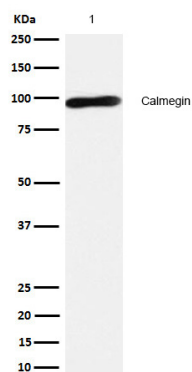
ICC/IF:

1:50~1:100

IP:

1:20

Images



All lanes: Calmegin Rabbit mAb at 1/1k dilution

Lane 1 : JK whole cell lysates

Lysates/proteins at 20 µg per lane.

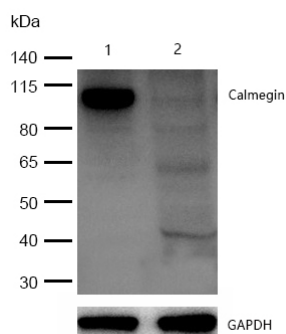
Secondary

All lanes : Goat Anti-Rabbit IgG H&L (HRP) at 1/20000 dilution

Predicted band size: 70 kDa

Observed band size: 100 kDa

Exposure time: 4 seconds

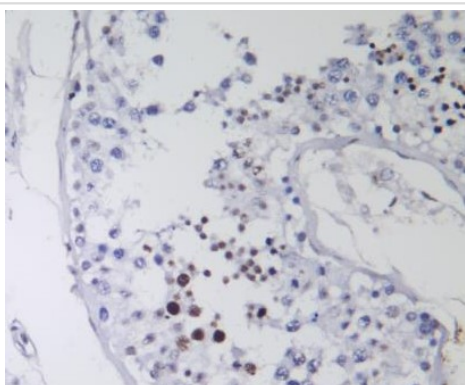


All lanes: Calmegin Rabbit mAb at 1/1k dilution

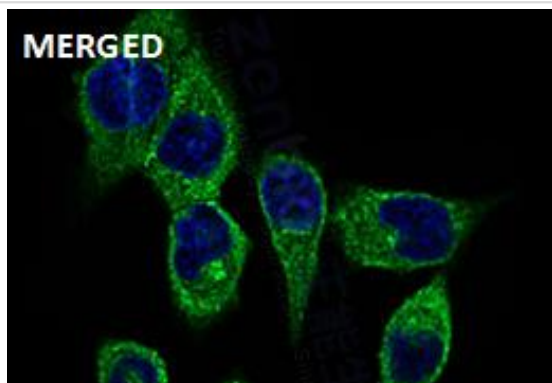
Lane 1 : Wild-type HeLa cell lysate

Lane 2 : Calmegin knockdown HeLa cell lysate

Lysates/proteins at 20 µg per lane.



Formalin-fixed, paraffin-embedded human testis tissue stained for Calmegin using 56682 at 1/100 dilution in immunohistochemical analysis.



Immunocytochemistry/ Immunofluorescence Calmegin antibody (56682) ICC/IF staining of Calmegin in HeLa cells. Cells were fixed with 4% Paraformaldehyde permeabilized with 0.1% Triton X-100.

Samples were incubated with 56682 at a working dilution of 1/100. The secondary antibody was Alexa FluorB 488 goat anti rabbit, used at a dilution of 1/500.

Nuclei were counterstained with DAPI.

Product Description

Functions during spermatogenesis as a chaperone for a range of client proteins that are important for sperm adhesion onto the egg zona pellucida and for subsequent penetration of the zona pellucida. Required for normal sperm migration from the uterus into the oviduct. Required for normal male fertility. Binds calcium ions (By similarity).

Note: This product is for in vitro research use only and is not intended for use in humans or animals.