

FE65 Rabbit mAb

Catalog No: #56684



Package Size: #56684-1 50ul #56684-2 100ul

Orders: order@signalwayantibody.comSupport: tech@signalwayantibody.com

Description

Product Name	FE65 Rabbit mAb
Host Species	Recombinant Rabbit
Clonality	Monoclonal
Isotype	Rabbit IgG
Purification	Affinity-chromatography
Applications	WB IHC ICC/IF
Species Reactivity	Human
Specificity	FE65 Antibody detects endogenous levels of total FE65
Immunogen Description	A synthesized peptide derived from human FE65
Conjugates	Unconjugated
Other Names	APBB1; Protein Fe65; RIR;
Accession No.	Uniprot:O00213
Calculated MW	77kDa
SDS-PAGE MW	100kDa
Formulation	Rabbit IgG in phosphate buffered saline , pH 7.4, 150mM NaCl, 0.02% sodium azide and 50% glycerol.
Storage	Store at +4°C short term. Store at -20°C long term. Avoid freeze / thaw cycle.

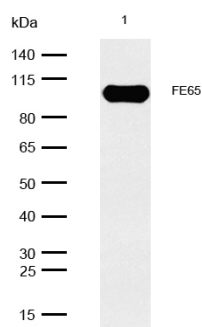
Application Details

WB:1:500~1:2000

IHC:1:50~1:200

ICC/IF:1:50~1:200

Images



All lanes: FE65 Rabbit mAb at 1/1k dilution

Lane 1 : SH-SY5Y whole cell lysates
Lysates/proteins at 20 µg per lane.

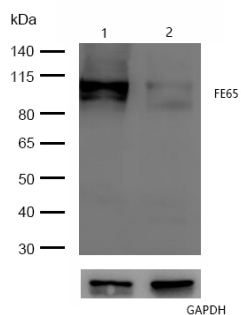
Secondary

All lanes : Goat Anti-Rabbit IgG H&L (HRP) at 1/20000 dilution

Predicted band size: 77 kDa

Observed band size: 100 kDa

Exposure time: 7 seconds

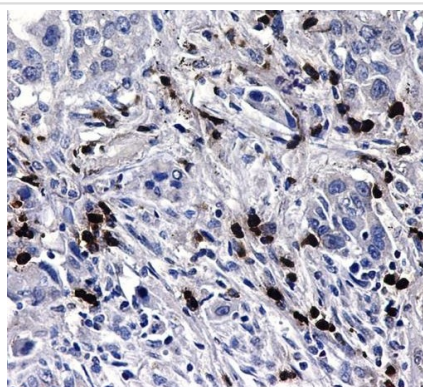


All lanes: FE65 Rabbit mAb at 1/1k dilution

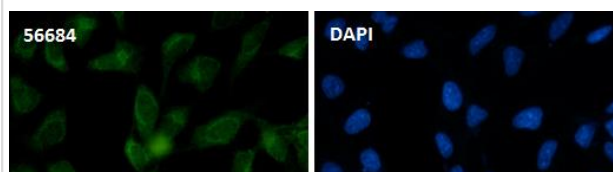
Lane 1 : Wild-type HeLa cell lysate

Lane 2 : FE65 knockdown HeLa cell lysate

Lysates/proteins at 20 µg per lane.



Formalin-fixed, paraffin-embedded human lung cancer tissue stained for FE65 using 56684 at 1/100 dilution in immunohistochemical analysis.



Immunocytochemistry/ Immunofluorescence FE65 antibody (56684) ICC/IF staining of FE65 in 293T cells. Cells were fixed with 4% Paraformaldehyde permeabilized with 0.1% Triton X-100.

Samples were incubated with 56684 at a working dilution of 1/100. The secondary antibody was Alexa FluorB 488 goat anti rabbit, used at a dilution of 1/500.

Nuclei were counterstained with DAPI.

Product Description

Transcription coregulator that can have both coactivator and corepressor functions. Adapter protein that forms a transcriptionally active complex with the gamma-secretase-derived amyloid precursor protein (APP) intracellular domain. Plays a central role in the response to DNA damage by translocating to the nucleus and inducing apoptosis.

Note: This product is for in vitro research use only and is not intended for use in humans or animals.