

PDLIM1 Rabbit mAb

Catalog No: #56823



Package Size: #56823-1 50ul #56823-2 100ul

Orders: order@signalwayantibody.comSupport: tech@signalwayantibody.com

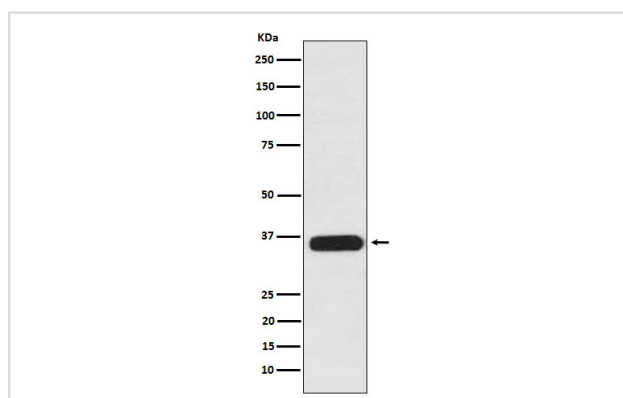
Description

Product Name	PDLIM1 Rabbit mAb
Host Species	Recombinant Rabbit
Clonality	Monoclonal
Isotype	Rabbit IgG
Purification	Affinity-chromatography
Applications	WB ICC/IF FC
Species Reactivity	Human;Mouse;Rat
Specificity	PDLIM1 Antibody detects endogenous levels of total PDLIM1
Immunogen Description	A synthesized peptide derived from human PDLIM1
Conjugates	Unconjugated
Other Names	CLIM1; CLP36; Elfin; Enigma; hCLIM1; Pdlim1;
Accession No.	Uniprot:O00151
Calculated MW	36kDa
Formulation	Rabbit IgG in phosphate buffered saline , pH 7.4, 150mM NaCl, 0.02% sodium azide and 50% glycerol.
Storage	Store at +4°C short term. Store at -20°C long term. Avoid freeze / thaw cycle.

Application Details

WB:1:500~1:2000ICC/IF:1:50~1:200FC:1:50

Images



Western blot analysis of PDLIM1 expression in 293T cell lysate.

Product Description

Cytoskeletal protein that may act as an adapter that brings other proteins (like kinases) to the cytoskeleton.

Published Papers

et al., Unraveling pathogenesis, biomarkers and potential therapeutic agents for endometriosis associated with disulfidptosis based on bioinformatics analysis, machine learning and experiment validation. In J Biol Eng on 2024 Jul 26 by Xiaoxuan Zhao, Yang Zhao,et al..PMID:39061076, , (2024)
[PMID:39061076](#)

Note: This product is for in vitro research use only and is not intended for use in humans or animals.