

AP1G1 Rabbit mAb

Catalog No: #56877



Package Size: #56877-1 50ul #56877-2 100ul

Orders: order@signalwayantibody.comSupport: tech@signalwayantibody.com

Description

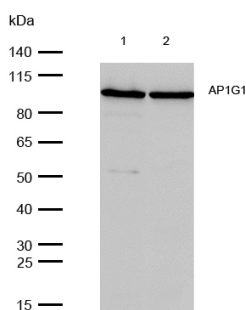
Product Name	AP1G1 Rabbit mAb
Host Species	Recombinant Rabbit
Clonality	Monoclonal
Isotype	Rabbit IgG
Purification	Affinity-chromatography
Applications	WB IHC
Species Reactivity	Human;Mouse;Rat
Specificity	AP1G1 Antibody detects endogenous levels of total AP1G1
Immunogen Description	A synthesized peptide derived from human AP1G1
Conjugates	Unconjugated
Other Names	ADTG; AP1G1; CLAPG1;
Accession No.	Uniprot:O43747
Calculated MW	91kDa
SDS-PAGE MW	100kDa
Formulation	Rabbit IgG in phosphate buffered saline , pH 7.4, 150mM NaCl, 0.02% sodium azide and 50% glycerol.
Storage	Store at +4°C short term. Store at -20°C long term. Avoid freeze / thaw cycle.

Application Details

WB:1:500~1:2000

IHC:1:50~1:200

Images



All lanes: AP1G1 Rabbit mAb at 1/1k dilution

Lane 1 : MCF7 whole cell lysates Lane 2 : SH-SY5Y whole cell lysates

Lysates/proteins at 20 µg per lane.

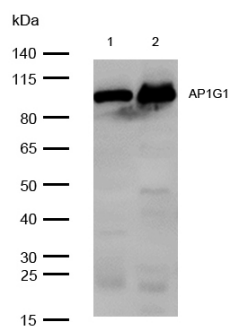
Secondary

All lanes : Goat Anti-Rabbit IgG H&L (HRP) at 1/20000 dilution

Predicted band size: 91 kDa

Observed band size: 100 kDa

Exposure time: 5 seconds



All lanes: AP1G1 Rabbit mAb at 1/1k dilution

Lane 1 : Mouse heart lysates Lane 2 : Mouse liver lysates
Lysates/proteins at 20 µg per lane.

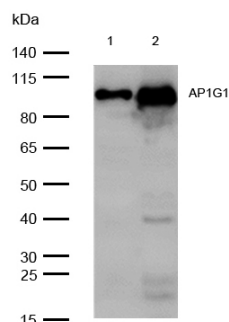
Secondary

All lanes : Goat Anti-Rabbit IgG H&L (HRP) at 1/20000 dilution

Predicted band size: 91 kDa

Observed band size: 100 kDa

Exposure time: 7 seconds



All lanes: AP1G1 Rabbit mAb at 1/1k dilution

Lane 1 : Rat heart lysates Lane 2 : Rat liver lysates
Lysates/proteins at 20 µg per lane.

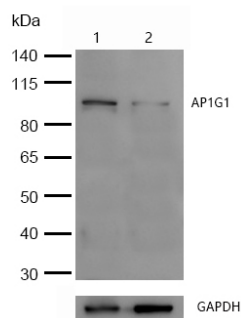
Secondary

All lanes : Goat Anti-Rabbit IgG H&L (HRP) at 1/20000 dilution

Predicted band size: 91 kDa

Observed band size: 100 kDa

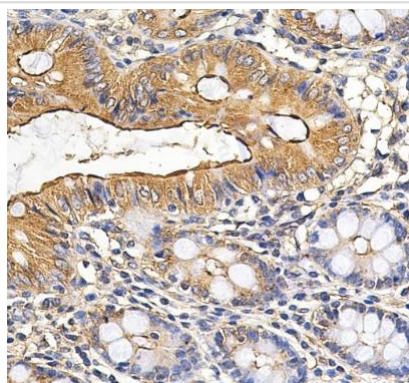
Exposure time: 6 seconds



All lanes: AP1G1 Rabbit mAb at 1/1k dilution

Lane 1 : Wild-type HeLa cell lysate
Lane 2 : AP1G1 knockdown HeLa cell lysate

Lysates/proteins at 20 µg per lane.



Formalin-fixed, paraffin-embedded human colon cancer tissue stained for AP1G1 using 56877 at 1/100 dilution in immunohistochemical analysis.

Product Description

Subunit of clathrin-associated adaptor protein complex 1 that plays a role in protein sorting in the late-Golgi/trans-Golgi network (TGN) and/or endosomes. The AP complexes mediate both the recruitment of clathrin to membranes and the recognition of sorting signals within the cytosolic tails of transmembrane cargo molecules.

Note: This product is for in vitro research use only and is not intended for use in humans or animals.