

## TAF1 Rabbit mAb

Catalog No: #56891



Package Size: #56891-1 50ul #56891-2 100ul

Orders: [order@signalwayantibody.com](mailto:order@signalwayantibody.com)Support: [tech@signalwayantibody.com](mailto:tech@signalwayantibody.com)

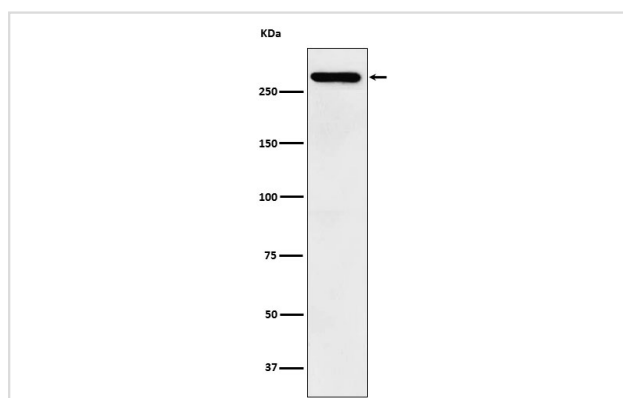
## Description

Product Name	TAF1 Rabbit mAb
Host Species	Recombinant Rabbit
Clonality	Monoclonal
Isotype	Rabbit IgG
Purification	Affinity-chromatography
Applications	WB
Species Reactivity	Human;Mouse;Rat
Specificity	TAF1 Antibody detects endogenous levels of total TAF1
Immunogen Description	A synthesized peptide derived from human TAF1
Conjugates	Unconjugated
Other Names	BA2R; CCG1; CCGS; DYT3; N TAF1; NSCL2; p250; TAF1; TAF2A; TAFII250; XDP;
Accession No.	Uniprot:P21675
Calculated MW	300kDa
Formulation	Rabbit IgG in phosphate buffered saline , pH 7.4, 150mM NaCl, 0.02% sodium azide and 50% glycerol.
Storage	Store at +4°C short term. Store at -20°C long term. Avoid freeze / thaw cycle.

## Application Details

WB:1:500~1:2000

## Images



Western blot analysis of TAF1 expression in SH-SY5Y cell lysate.

## Product Description

Largest component and core scaffold of the TFIID basal transcription factor complex. Contains novel N- and C-terminal Ser/Thr kinase domains which can autophosphorylate or transphosphorylate other transcription factors.

---

Note: This product is for in vitro research use only and is not intended for use in humans or animals.