

## CC2D1A Rabbit mAb

Catalog No: #56901

Package Size: #56901-1 50ul #56901-2 100ul

Orders: [order@signalwayantibody.com](mailto:order@signalwayantibody.com)Support: [tech@signalwayantibody.com](mailto:tech@signalwayantibody.com)

## Description

Product Name	CC2D1A Rabbit mAb
Host Species	Recombinant Rabbit
Clonality	Monoclonal
Isotype	Rabbit IgG
Purification	Affinity-chromatography
Applications	WB IHC ICC/IF
Species Reactivity	Human;Mouse;Rat
Specificity	CC2D1A Antibody detects endogenous levels of total CC2D1A
Immunogen Description	A synthesized peptide derived from human CC2D1A
Conjugates	Unconjugated
Other Names	Coiled coil and C2 domain containing 1A; FREUD 1; Freud 1/Aki1; MRT3;
Accession No.	Uniprot:Q6P1N0
Calculated MW	104kDa
SDS-PAGE MW	130kDa
Formulation	Rabbit IgG in phosphate buffered saline , pH 7.4, 150mM NaCl, 0.02% sodium azide and 50% glycerol.
Storage	Store at +4°C short term. Store at -20°C long term. Avoid freeze / thaw cycle.

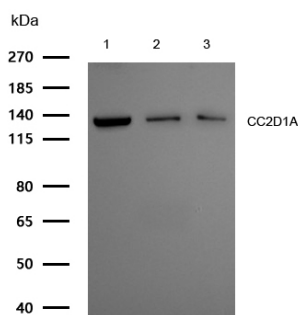
## Application Details

WB:1:500~1:2000

ICC/IF:1:50~1:200

FC:1:50

## Images



All lanes: CC2D1A Rabbit mAb at 1/1k dilution

Lane 1 : Hela whole cell lysates Lane 2 : Mouse heart lysates

Lane 3 : Rat heart lysates

Lysates/proteins at 20 µg per lane.

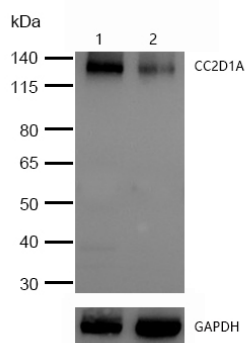
Secondary

All lanes : Goat Anti-Rabbit IgG H&amp;L (HRP) at 1/20000 dilution

Predicted band size: 104 kDa

Observed band size: 130 kDa

Exposure time: 5 seconds

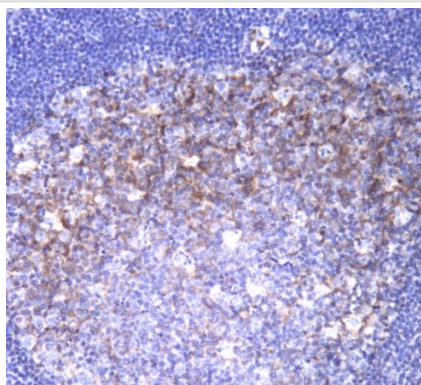


All lanes :CC2D1A Rabbit mAb at 1/1k dilution

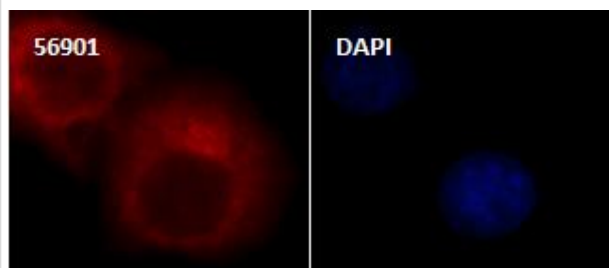
Lane 1 : Wild-type HAP1 cell lysate

Lane 2 : CC2D1A knockdown HAP1 cell lysate

Lysates/proteins at 20 µg per lane.



Formalin-fixed, paraffin-embedded human tonsil tissue stained for CC2D1A using 56901 at 1/100 dilution in immunohistochemical analysis.



Immunocytochemistry/ Immunofluorescence CC2D1A antibody (56901) ICC/IF staining of CC2D1A in MCF7 cells. Cells were fixed with 4% Paraformaldehyde permeabilized with 0.1% Triton X-100.

Samples were incubated with 56901 at a working dilution of 1/100. The secondary antibody was Alexa FluorB 647 goat anti rabbit, used at a dilution of 1/500.

Nuclei were counterstained with DAPI.

## Product Description

May play a role in the altered regulation of HTR1A associated with anxiety and major depression. It also mediates HDAC-independent repression of HTR1A promoter in neuronal cell.

Note: This product is for in vitro research use only and is not intended for use in humans or animals.