

## PIM2 Rabbit mAb

Catalog No: #56914



Package Size: #56914-1 50ul #56914-2 100ul

Orders: [order@signalwayantibody.com](mailto:order@signalwayantibody.com)Support: [tech@signalwayantibody.com](mailto:tech@signalwayantibody.com)

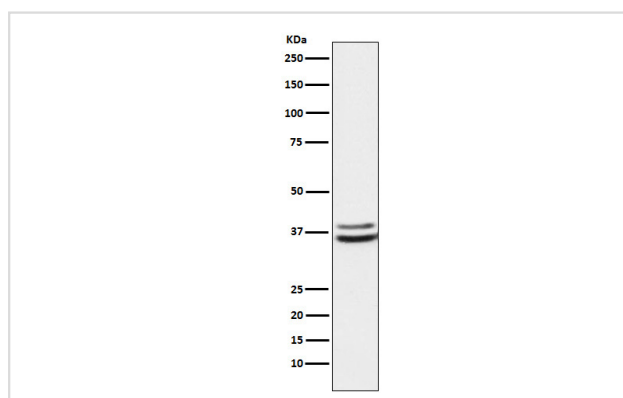
## Description

Product Name	PIM2 Rabbit mAb
Host Species	Recombinant Rabbit
Clonality	Monoclonal
Isotype	Rabbit IgG
Purification	Affinity-chromatography
Applications	WB IP
Species Reactivity	Human;Mouse;Rat
Specificity	PIM2 Antibody detects endogenous levels of total PIM2
Immunogen Description	A synthesized peptide derived from PIM2
Conjugates	Unconjugated
Other Names	PIM2; Pim2h;
Accession No.	Uniprot:Q9P1W9
Calculated MW	34-44kDa
Formulation	Rabbit IgG in phosphate buffered saline , pH 7.4, 150mM NaCl, 0.02% sodium azide and 50% glycerol.
Storage	Store at +4°C short term. Store at -20°C long term. Avoid freeze / thaw cycle.

## Application Details

WB:1:500~1:2000IP:1:50

## Images



Western blot analysis of PIM2 expression in K562 cell lysate.

## Product Description

Promotes cell survival in response to a variety of proliferative signals via positive regulation of the I-kappaB kinase/NF-kappaB cascade; this process requires phosphorylation of MAP3K8/COT.

---

Note: This product is for in vitro research use only and is not intended for use in humans or animals.