

CAP1 Rabbit mAb

Catalog No: #56995



Package Size: #56995-1 50ul #56995-2 100ul

Orders: order@signalwayantibody.com

Support: tech@signalwayantibody.com

Description

Product Name	CAP1 Rabbit mAb
Host Species	Recombinant Rabbit
Clonality	Monoclonal
Isotype	Rabbit IgG
Purification	Affinity-chromatography
Applications	WB IHC ICC/IF
Species Reactivity	Human
Specificity	CAP1 Antibody detects endogenous levels of total CAP1
Immunogen Description	A synthesized peptide derived from human CAP1
Conjugates	Unconjugated
Other Names	CAP1; CAP1 PEN;
Accession No.	Uniprot:Q01518
Calculated MW	52kDa
SDS-PAGE MW	55kDa
Formulation	Rabbit IgG in phosphate buffered saline , pH 7.4, 150mM NaCl, 0.02% sodium azide and 50% glycerol.
Storage	Store at +4°C short term. Store at -20°C long term. Avoid freeze / thaw cycle.

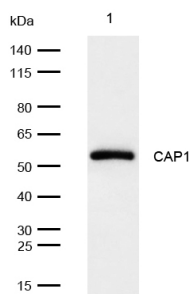
Application Details

WB:1:500~1:2000

IHC:1:50~1:200

ICC/IF:1:50~1:200

Images



All lanes: CAP1 Rabbit mAb at 1/1k dilution

Lane 1 : Raji whole cell lysates
Lysates/proteins at 20 µg per lane.

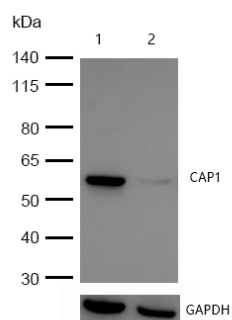
Secondary

All lanes : Goat Anti-Rabbit IgG H&L (HRP) at 1/20000 dilution

Predicted band size: 52 kDa

Observed band size: 55 kDa

Exposure time: 3 seconds

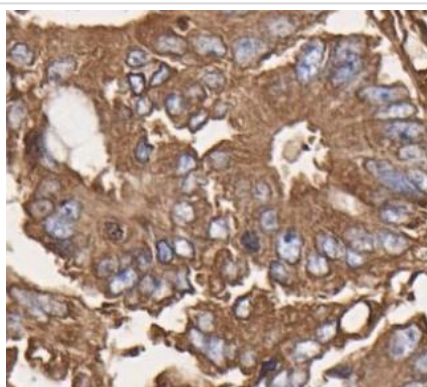


All lanes: CAP1 Rabbit mAb at 1/1k dilution

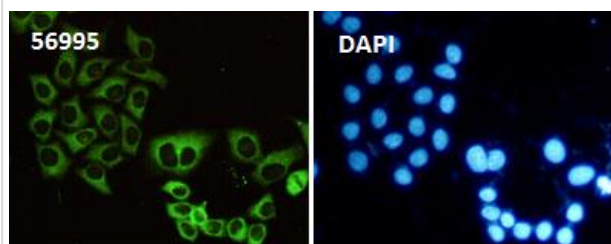
Lane 1 : Wild-type HeLa cell lysate

Lane 2 : CAP1 knockdown HeLa cell lysate

Lysates/proteins at 20 µg per lane.



Formalin-fixed, paraffin-embedded human colon cancer tissue stained for CAP1 using 56995 at 1/100 dilution in immunohistochemical analysis.



Immunocytochemistry/ Immunofluorescence CAP1 antibody (56995) ICC/IF staining of CAP1 in HeLa cells. Cells were fixed with 4% Paraformaldehyde permeabilized with 0.1% Triton X-100.

Samples were incubated with 56995 at a working dilution of 1/100. The secondary antibody was Alexa FluorB 488 goat anti rabbit, used at a dilution of 1/500.

Nuclei were counterstained with DAPI.

Product Description

Directly regulates filament dynamics and has been implicated in a number of complex developmental and morphological processes, including mRNA localization and the establishment of cell polarity.

Note: This product is for in vitro research use only and is not intended for use in humans or animals.