

CLPTM1 Rabbit mAb

Catalog No: #57000



Package Size: #57000-1 50ul #57000-2 100ul

Orders: order@signalwayantibody.comSupport: tech@signalwayantibody.com

Description

Product Name	CLPTM1 Rabbit mAb
Host Species	Recombinant Rabbit
Clonality	Monoclonal
Isotype	Rabbit IgG
Purification	Affinity-chromatography
Applications	WB;IHC;IF
Species Reactivity	Human
Specificity	CLPTM1 Antibody detects endogenous levels of total CLPTM1
Immunogen Description	A synthesized peptide derived from human CLPTM1
Conjugates	Unconjugated
Other Names	HS9; N14;
Accession No.	O96005
Calculated MW	76 kDa
SDS-PAGE MW	76 kDa
Formulation	Rabbit IgG in phosphate buffered saline , pH 7.4, 150mM NaCl, 0.02% sodium azide and 50% glycerol.
Storage	Store at +4°C short term. Store at -20°C long term. Avoid freeze / thaw cycle.

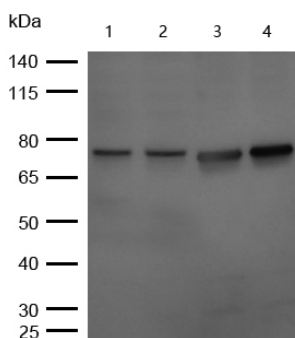
Application Details

WB:1:500~1:2000

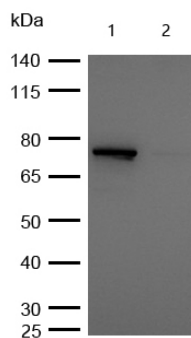
IHC:1:50~1:200

IF:1:50~1:200

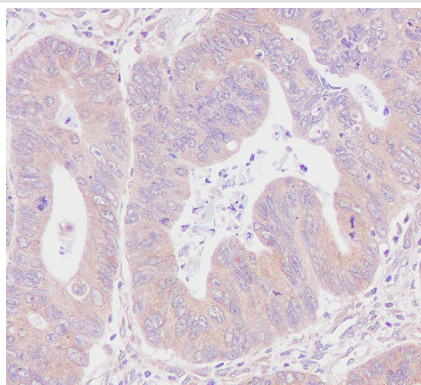
Images



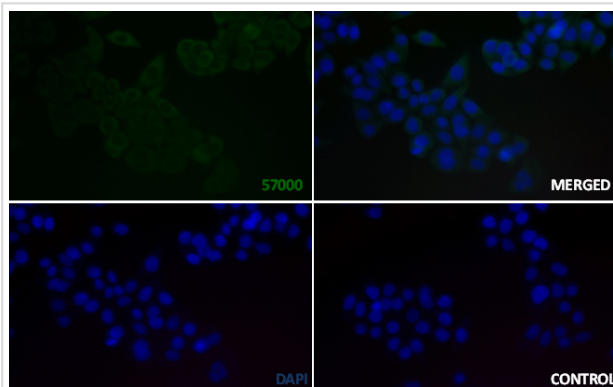
All lanes : Putative lipid scramblase CLPTM1 Rabbit mAb at 1/1k dilution Lane 1 : HepG2 whole cell lysates Lane 2 : Hela whole cell lysates Lane 3 : MCF7 whole cell lysates Lane 4 : HUVEC whole cell lysates Lysates/proteins at 20 µg per lane. Secondary All lanes : Goat Anti-Rabbit IgG H&L (HRP) at 1/20000 dilution Predicted band size: 76 kDa Observed band size: 76 kDa Exposure time: 10 seconds



All lanes : Putative lipid scramblase CLPTM1 Rabbit mAb at 1/1k dilution Lane 1 : Wild-type HeLa cell lysate Lane 2 : Putative lipid scramblase CLPTM1 knockdown HeLa cell lysate Lysates/proteins at 20 µg per lane.



Formalin-fixed, paraffin-embedded human colon carcinoma tissue stained for Putative lipid scramblase CLPTM1 using 57000 at 1/100 dilution in immunohistochemical analysis.



Immunocytochemistry/ Immunofluorescence Putative lipid scramblase CLPTM1 antibody (57000) 57000 staining Putative lipid scramblase CLPTM1 in the HeLa cell line by ICC/IF. Cells were fixed with 4% Paraformaldehyde permeabilized with 0.1% Triton X-100. Samples were incubated with 57000 at a working dilution of 1/100. The secondary antibody was Alexa FluorB 488 goat anti rabbit, used at a dilution of 1/500. The negative control is shown in bottom right hand panel - for the negative control, purified 57000 was used at a dilution of 1/100 followed by Alexa FluorB 647 goat anti- rabbit antibody at a dilution of 1/500. Nuclei were counterstained with DAPI.

Product Description

CLPTM1 may play a role in T-cell development. A chromosomal translocation involving CLPTM1 is found in a family with cleft lip and palate.

Note: This product is for in vitro research use only and is not intended for use in humans or animals.