

## CLIP170 Rabbit mAb

Catalog No: #57074



Package Size: #57074-1 50ul #57074-2 100ul

Orders: order@signalwayantibody.com

Support: tech@signalwayantibody.com

## Description

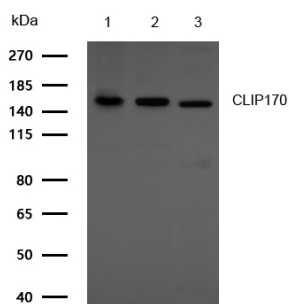
Product Name	CLIP170 Rabbit mAb
Host Species	Recombinant Rabbit
Clonality	Monoclonal
Isotype	Rabbit IgG
Purification	Affinity-chromatography
Applications	WB IHC ICC/IF
Species Reactivity	Human
Specificity	CLIP170 Antibody detects endogenous levels of total CLIP170
Immunogen Description	A synthesized peptide derived from human CLIP170
Conjugates	Unconjugated
Other Names	CLIP; CYLN1; Restin; RSN;
Accession No.	Uniprot:P30622
Calculated MW	162kDa
SDS-PAGE MW	162kDa
Formulation	Rabbit IgG in phosphate buffered saline , pH 7.4, 150mM NaCl, 0.02% sodium azide and 50% glycerol.
Storage	Store at +4°C short term. Store at -20°C long term. Avoid freeze / thaw cycle.

## Application Details

WB:1:500~1:2000

IHC:1:50~1:200

## Images



All lanes: CLIP170 Rabbit mAb at 1/1k dilution

Lane 1 : Hela whole cell lysates Lane 2 : HepG2 whole cell lysates Lane 3 : MCF-7 whole cell lysates  
Lysates/proteins at 20 µg per lane.

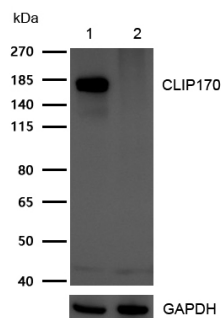
Secondary

All lanes : Goat Anti-Rabbit IgG H&amp;L (HRP) at 1/20000 dilution

Predicted band size: 162 kDa

Observed band size: 162 kDa

Exposure time: 4 seconds

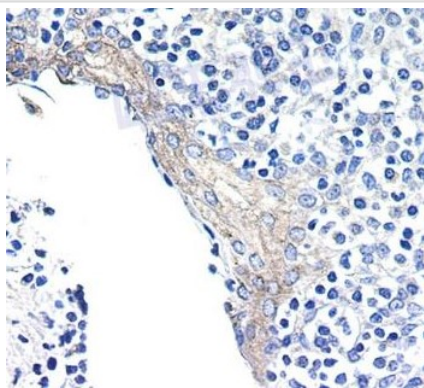


All lanes: CLIP170 Rabbit mAb at 1/1k dilution

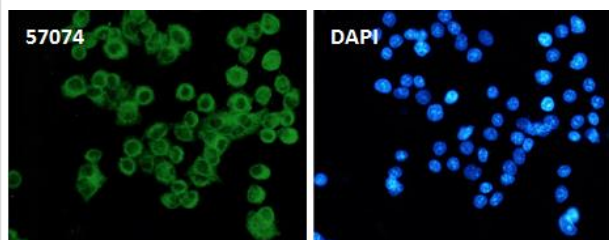
Lane 1 : Wild-type HeLa cell lysate

Lane 2 : CLIP170 knockdown HeLa cell lysate

Lysates/proteins at 20 µg per lane.



Formalin-fixed, paraffin-embedded human tonsil tissue stained for CLIP170 using 57074 at 1/100 dilution in immunohistochemical analysis.



Immunocytochemistry/ Immunofluorescence CLIP170 antibody (57074) ICC/IF staining of CLIP170 in HeLa cells. Cells were fixed with 4% Paraformaldehyde permeabilized with 0.1% Triton X-100.

Samples were incubated with 57074 at a working dilution of 1/100. The secondary antibody was Alexa FluorB 488 goat anti rabbit, used at a dilution of 1/500.

Nuclei were counterstained with DAPI.

## Product Description

Seems to be a intermediate filament associated protein that links endocytic vesicles to microtubules.

Note: This product is for in vitro research use only and is not intended for use in humans or animals.